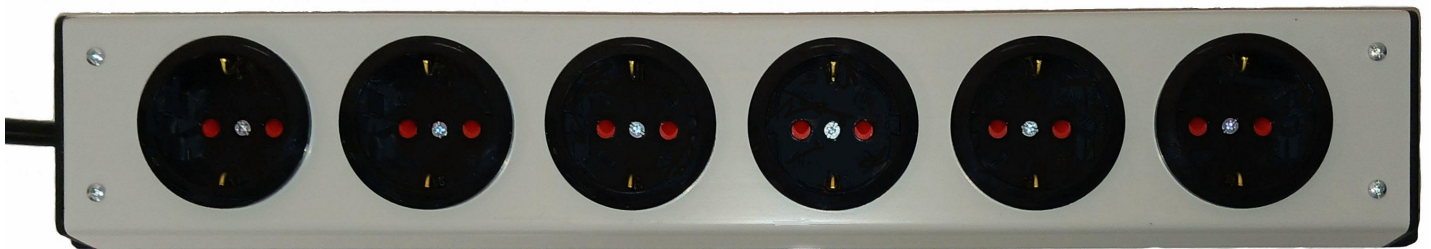




6 OUTLET SCHUKO AC POWER STRIP, 250 VAC, 16A

PS26



Overview:

The PS26 is a 6-outlet European Schuko 6-Outlet Power Strip. It is for use in most European and Asian countries. It is also used in some African countries. It used for connecting single phase AC power to devices.

Applications:

- Used to connect devices requiring single phase AC power.
- For use in Most European Countries.

Features:

- 6-Outlets.
- 16 Amp.
- Single Phase Power.
- PVC Construction.
- Wall mountable.



Specifications:

ELECTRICAL:

Input Voltage: 240VAC (220-240VAC).
Maximum Current: 16 Amps.
Frequency: 50 Hz.
Number of Outlets: 6.
Outlets: CEE 7/3 (EU1-16R).
Mating Plugs: CEE 7/4, CE 7/7, CEE 7/16, CEE 7/17. *CEE 7/6 Plug will fit but the Ground or Earthed connection is not made.
Cord: 1.5mm², HO5V VF-3G, 70°C.

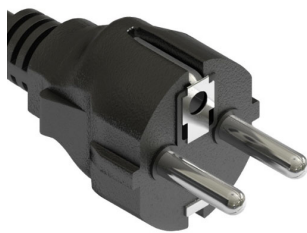
MECHANICAL:

Operating Temperature: 23°F to +104°F Average over 24 hours not to exceed +95°F (-5°C to +40°C, Average over 24 hours not to exceed +35°C).
Material: PVC.
Dimensions: 17.0" L x 2.8" W x 1.8" D (431.8mm L x 71.8mm W x 46.5mm D).
Weight: 1.1 lbs (0.5 kg.)

CERTIFICATIONS:

Approvals: CE, Reach, RoHS.
KEMA

MATING PLUGS



CEE 7/7 Plug



CEE 7/4 Plug



CEE 7/16 Plug



CEE 7/17 Plug



*CEE 7/6 Plug

