
100pF Filtered DB15 M/F Bulkhead Connector

CONN259



Overview:

The CONN259 is a 15 Pin Bulkhead Male to Female 100pF Pi Filtered D-Subminiature connector. This connector will provide RF filtering for many different applications. When selecting a DB15 interface, RF insertion loss is inverse to data speed allowed.

Applications:

- RF Shielded Test Enclosures or Screen Rooms.
- Ethernet Pass Through with STERJ45.
- I²C data.
- Switching Circuits.
- Audio Circuits.
- Low voltage DC.
- Low voltage AC.

Features:

- Provides RF filtering to maintain an enclosure's high RF isolation level while providing a feed-through path for electrical circuits.
- Nickel plated metal construction to provide good RF bond to enclosure, screen room, or RF test equipment.
- Easy connection via standard serial cables.



Specifications:

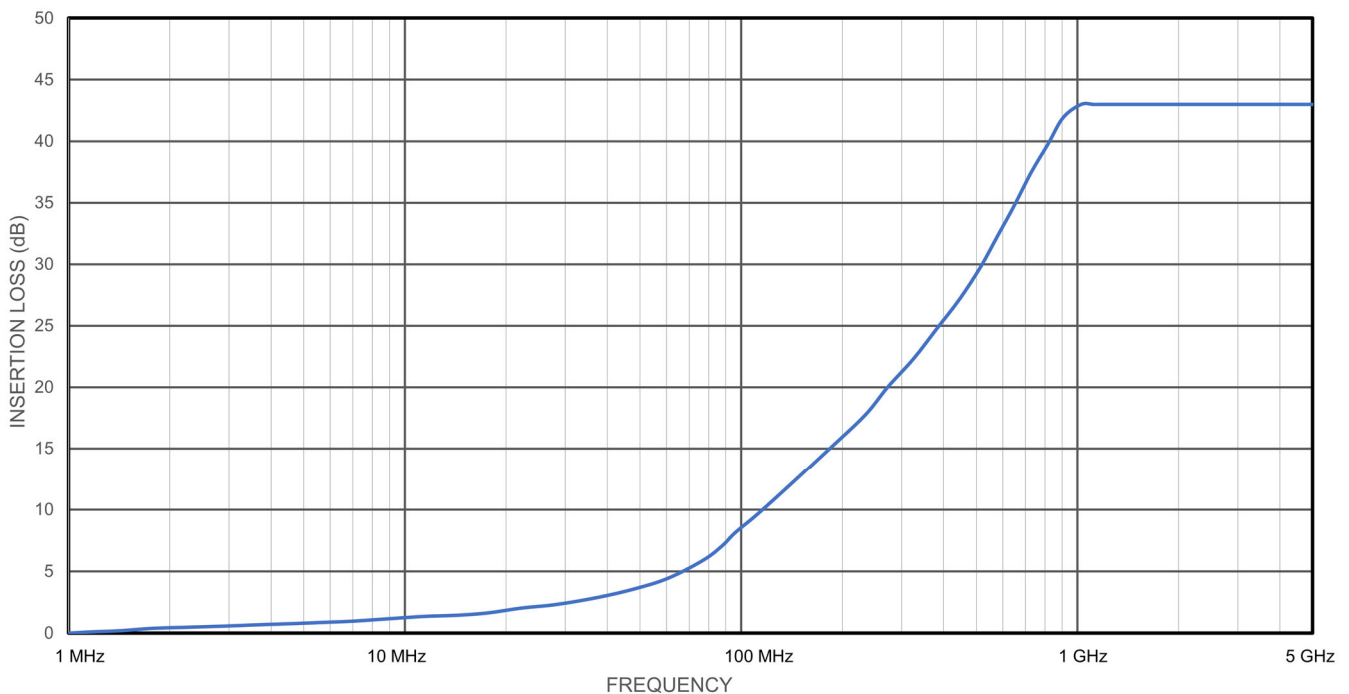
Electrical:

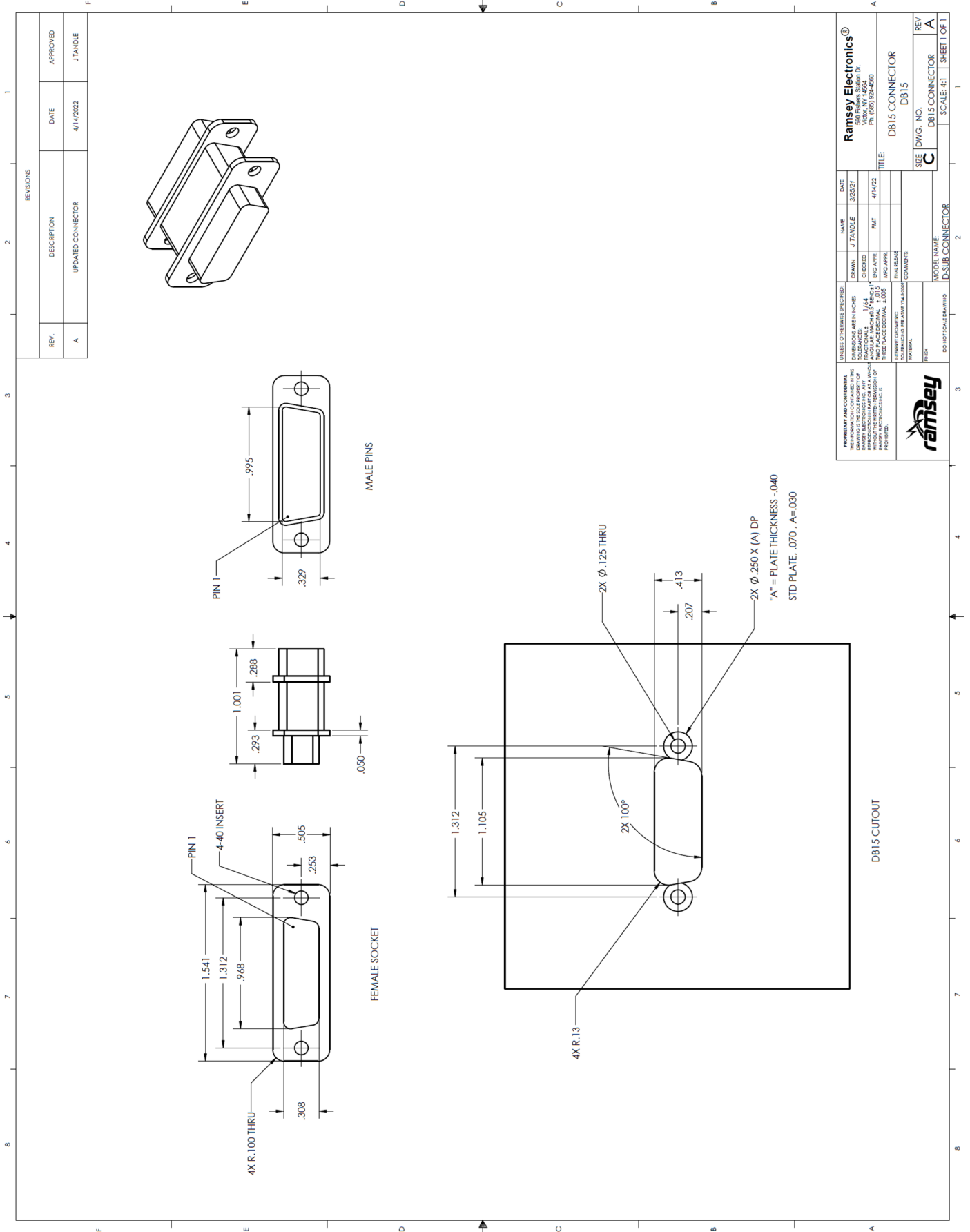
Working Voltage: 100VDC.
Maximum Current: 5 Amps.
RF Current: 0.3 Amps.
Contact Resistance: 10 Milliohms maximum.
Dielectric Withstanding Voltage: 300V.
Capacitance: 100pF (+100% -0%).
Filter Type: Pi Filter.
3dB Cutoff Frequency: 32MHz maximum.
Filter Inductance: ~860nH between 100kHz and 1MHz.
Conductive Insertion Loss (Min): 2dB @ 50MHz
5dB @ 100MHz
16dB @ 500MHz
33dB @ 1GHz

Mechanical:

Pins: 15 Pins, Male/Female.
Operating Temperature: -55°C to +125°C.
Shell: Zinc or aluminum diecast, Nickel plated 150µ inches (3.8µm) min.
Pin Contacts: Copper Alloy, 15µ inches (.38µm) gold plated over nickel.
Socket Cup Contacts: Copper Alloy, 30µ inches (.76µm) gold plated over nickel.
Accepts 20 gauge wire.
Ground Plane: Brass, Solder plated.

Typical Insertion Loss





REV.	DESCRIPTION	DATE	APPROVED
A	UPDATED CONNECTOR	4/14/2022	J.TANDLE

UNLESS OTHERWISE SPECIFIED: DIMENSIONS ARE IN INCHES FRACTIONAL DIMENSIONS SHALL BE IN 1/64 INCHES DECIMAL DIMENSIONS SHALL BE TO TWO PLACE DECIMALS HOLE DIMENSIONS SHALL BE TO TWO PLACE DECIMALS DIMENSIONS TO BE HIDDEN BY OTHER DIMENSIONS SHALL BE HIDDEN	DRAWN: J.TANDLE CHECKED: PMT ENG APPR: E.EOG MFG APPR: PMT FINAL RELEASE: 11-14-2020 COMMENTS:	DATE: 3/23/22 4/14/22	NAME: J.TANDLE PMT
--	---	--------------------------	-----------------------

PROPERTY AND CONFIDENTIAL INFORMATION: THIS DRAWING IS THE PROPERTY OF RAMSEY ELECTRONICS AND IS NOT TO BE REPRODUCED OR TRANSMITTED IN ANY FORM OR BY ANY MEANS, ELECTRONIC OR MECHANICAL, INCLUDING PHOTOCOPYING, RECORDING, OR BY ANY INFORMATION STORAGE AND RETRIEVAL SYSTEM, WITHOUT PERMISSION IN WRITING FROM RAMSEY ELECTRONICS.	<p>Ramsey Electronics 1585 FRENCH SADDLE DR. WISSEY, NY 14569 PH: 518-524-4200 FX: 518-524-4200</p>
---	--

SIZE: DB15	REV: DB15 CONNECTOR
DWG. NO: DB15	SCALE: 4:1
WORKET NAME: D-SUB CONNECTOR	SHEET 1 OF 1

The information in this datasheet, although believed to be accurate, is not to be taken as warranty for which Ramsey Electronics assumes legal responsibility. Ramsey Electronics reserves the right to make changes, corrections, and improvements to its products and/or this document at anytime without notice.