

---

## 10pF Filtered DB9 M/F Bulkhead Connector

### CONN278



#### Overview:

The CONN278 is a 9 Pin Bulkhead Male to Female 10pF Pi Filtered D-Subminiature connector. This connector will provide RF filtering for many different applications. In our RF Shielded Test Enclosures, we mainly use the CONN278 interface for a USB2.0 interface. When used as a USB2.0 interface, it will require either the STEUSB-S or STEUSB-AS adapter set. When selecting a DB9 interface, RF insertion loss is inverse to data speed allowed.

#### Applications:

- RF Shielded Test Enclosures or Screen Rooms.
- USB2.0 Pass Through with STEUSB-S or STEUSB-AS adapter set.
- Switching Circuits.
- Audio Circuits.
- Low voltage DC.
- Low voltage AC.

#### Features:

- Nickel plated metal construction to provide good RF bond to enclosure, screen room, or RF test equipment.
- Easy connection via standard serial cables.



---

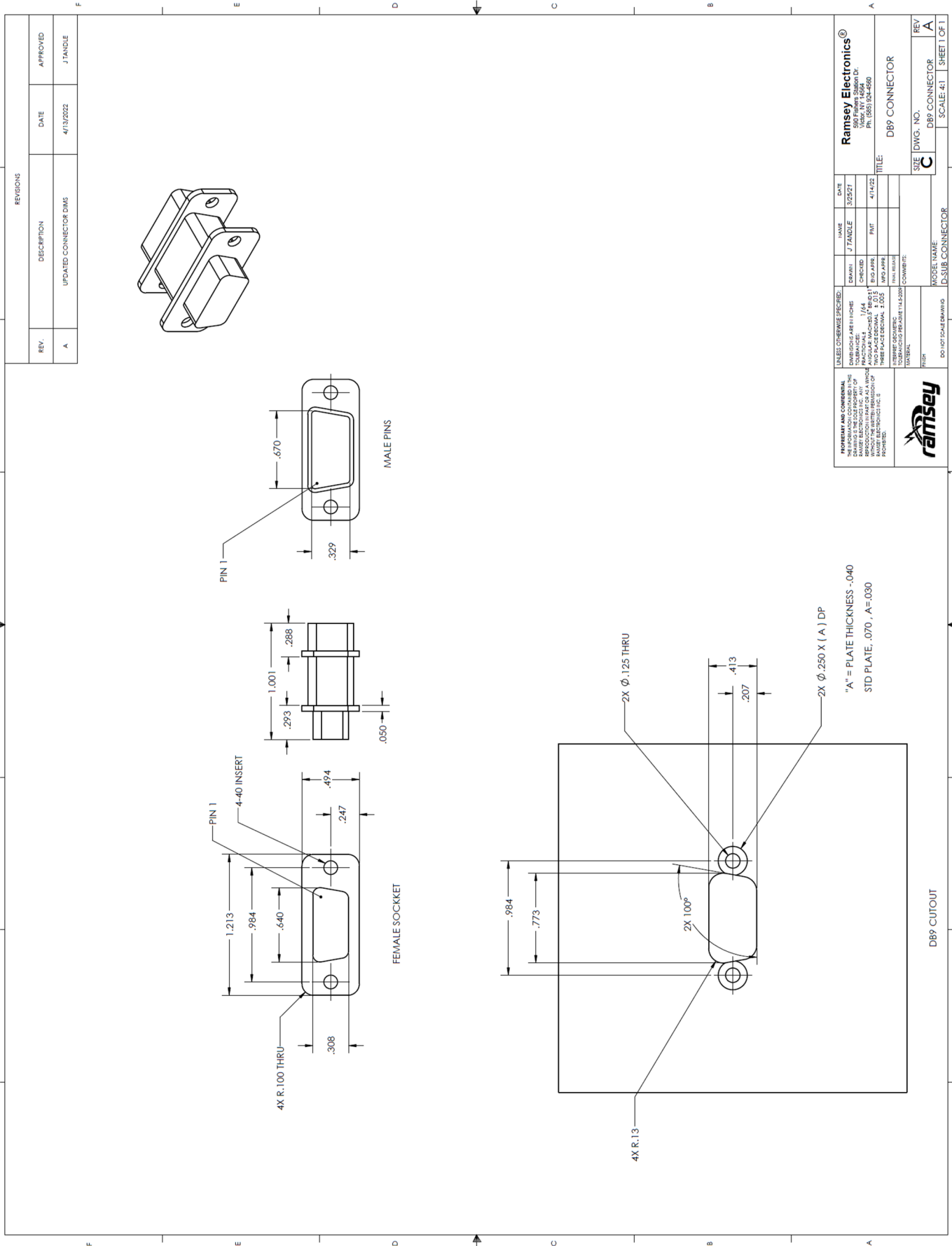
## Specifications:

### Electrical:

Working Voltage:	200VDC.
Maximum Current:	5 Amps.
RF Current:	0.3 Amps.
Contact Resistance:	10 Milliohms maximum.
Dielectric Withstanding Voltage:	600 Volts.
Capacitance:	10pF.
Filter Type:	Capacitive Filter.
Filter Inductance:	~860nH between 100kHz and 1MHz.
Conductive Insertion Loss (Min):	10dB @ 1GHz

### Mechanical:

Pins:	9 Pins, Male/Female.
Operating Temperature:	-55°C to +125°C.
Shell:	Zinc or aluminum diecast, Nickel plated 150μ inches (3.8μm) min.
Pin Contacts:	Copper Alloy, 15μ inches (.38μm) gold plated over nickel.
Socket Cup Contacts:	Copper Alloy, 30μ inches (.76μm) gold plated over nickel.
	Accepts 20 gauge wire.
Ground Plane:	Brass, Solder plated.



**RAMSEY ELECTRONICS**  
 5801 TAMPA 28800 DR  
 TAMPA, FL 33634  
 TEL: (813) 242-4200

**DATE:** 3/25/21  
**NAME:** J TANDLE  
**DRAWN:** J TANDLE  
**CHECKED:** J TANDLE  
**ENG APPR:** J TANDLE  
**MFG APPR:** J TANDLE  
**DATE:** 4/13/22

**MODEL NAME:** DB9 CONNECTOR  
**DO NOT SCALE DRAWING**

**REVISIONS:**  
 REV: A  
 DB9 CONNECTOR  
 SCALE: 4:1  
 SHEET 1 OF 1

**RAMSEY ELECTRONICS**

**PROPERTY AND CONFIDENTIALITY:**  
 THIS DRAWING IS THE PROPERTY OF RAMSEY ELECTRONICS. IT IS TO BE USED FOR THE MANUFACTURE OF THE PART SPECIFIED HEREIN ONLY. NO REPRODUCTION OR DISTRIBUTION OF THIS DRAWING IS PERMITTED WITHOUT THE WRITTEN PERMISSION OF RAMSEY ELECTRONICS.

**UNLESS OTHERWISE SPECIFIED:**  
 DIMENSIONS ARE IN INCHES  
 FINISH: AS SHOWN  
 TOLERANCES UNLESS OTHERWISE SPECIFIED:  
 FRACTIONS: ±0.005  
 DECIMALS: ±0.015  
 HOLE POSITION: ±0.010  
 HOLE DIA: ±0.005

**MATERIAL:** BRASS  
**FINISH:** POLISHED

**COMMENTS:**