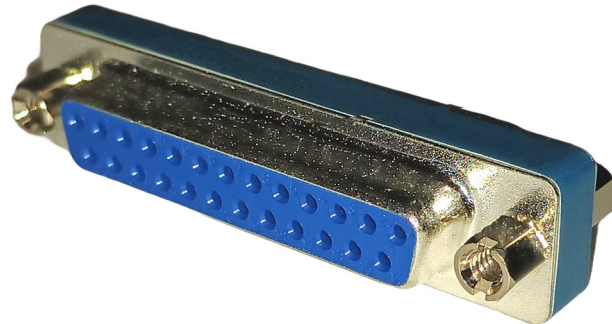


## DB25 Female to Female Gender Changer

### CONN388



#### Overview:

The CONN388 is a 25 Pin Bulkhead Female to Female D-Subminiature Gender Changer. It allows the connection of two DB25 male connectors.

#### Applications:

- D-Sub gender changers.
- RF Shielded Test Enclosures.
- RF Screen Rooms.

#### Features:

- Nickel plated metal construction to provide good RF bond to grounded enclosure, screen room, or RF test equipment.
- Fully Shielded to protect against electromagnetic interference.

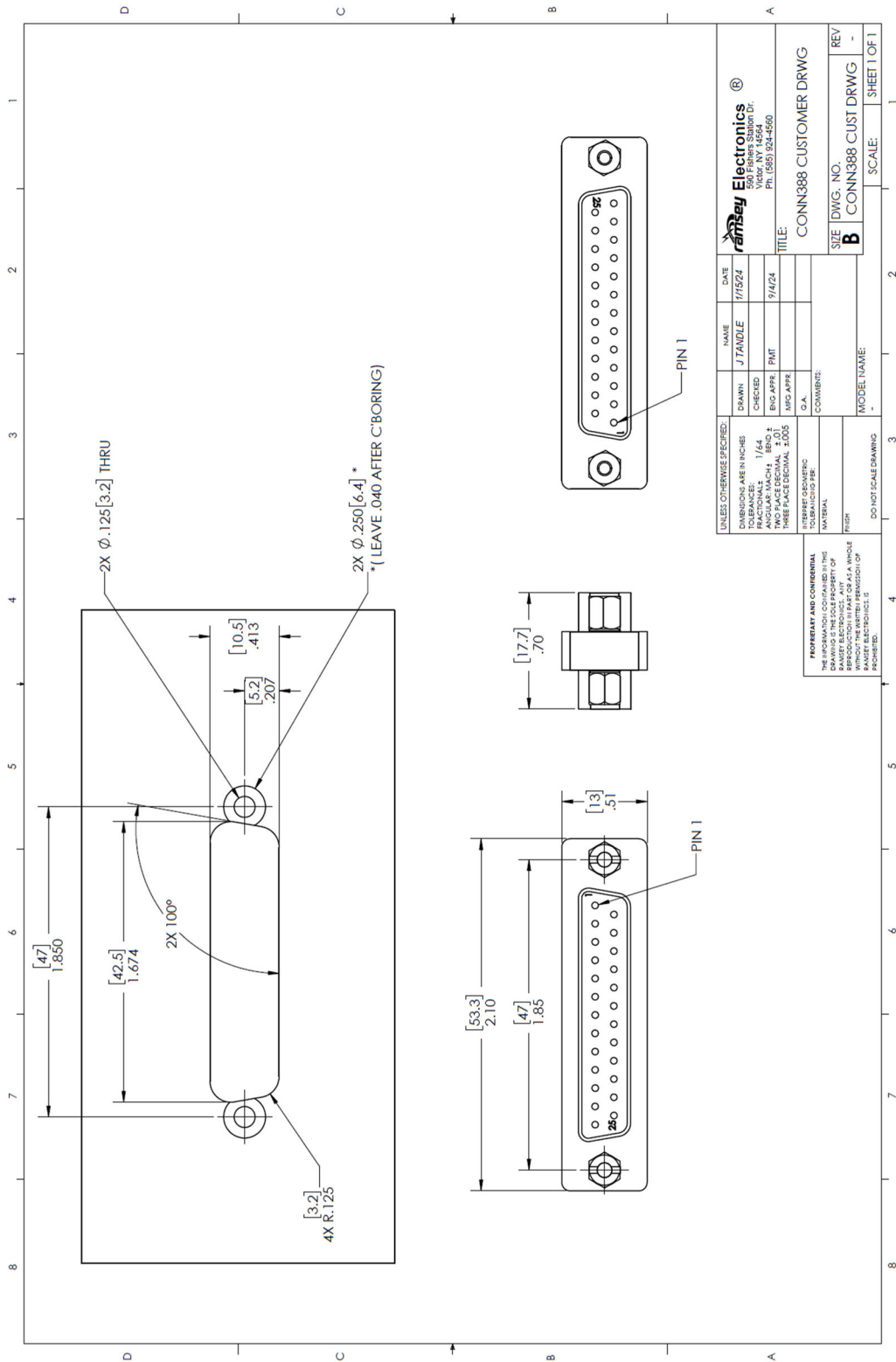
#### Specifications:

##### Mechanical:

|                        |  |
|------------------------|--|
| Number of Sockets:     | 25 each side, wired straight through.  |
| Operating Temperature: | -55C to +105C.                         |
| Shell:                 | Steel, TIN/Nickel plated.              |
| Pin Contacts:          | Copper Alloy, Gold plated 1-5u inches. |
| Hardware:              | Brass, Nickel plated.                  |
| Insulator:             | PBT Fiber Reinforced (UL94V-0 Rated).  |

##### ELECTRICAL:

|                          |                         |
|--------------------------|-------------------------|
| Maximum Current:         | 3 Amps.                 |
| Contact Resistance:      | 10 milliohms maximum.   |
| Insulation Resistance:   | 1000 MΩ MIN @ 500 VDC   |
| Dielectric Withstanding: | 1000 VAC (For 1 Minute) |



The information in this datasheet, although believed to be accurate, is not to be taken as warranty for which Ramsey Electronics assumes legal responsibility. Ramsey Electronics reserves the right to make changes, corrections, and improvements to its products and/or this document at anytime without notice.