
1000pF Filtered DB9 M/F Bulkhead Connector

CONN67



Overview:

The CONN67 is a 9 Pin Bulkhead Male to Female 1000pF Pi Filtered D-Subminiature connector. This connector will provide RF filtering for many different applications. In our RF Shielded Test Enclosures, we mainly use the interface for low speed data, low voltage DC and low voltage AC applications. This interface provides the highest RF filtering of all of our DB9 interfaces. This high level of RF filtering reduces the data speed that this interface will pass effectively.

Applications:

- RF Shielded Test Enclosures or Screen Rooms.
- RS232/RS422 type data.
- I²C data.
- Switching Circuits.
- Audio Circuits.
- Low voltage DC.
- Low voltage AC.

Features:

- Provides RF filtering to maintain an enclosure's high RF isolation level while providing a feed-through path for electrical circuits.
- Nickel plated metal construction to provide good RF bond to enclosure, screen room, or RF test equipment.
- Easy connection via standard serial cables.



Specifications:

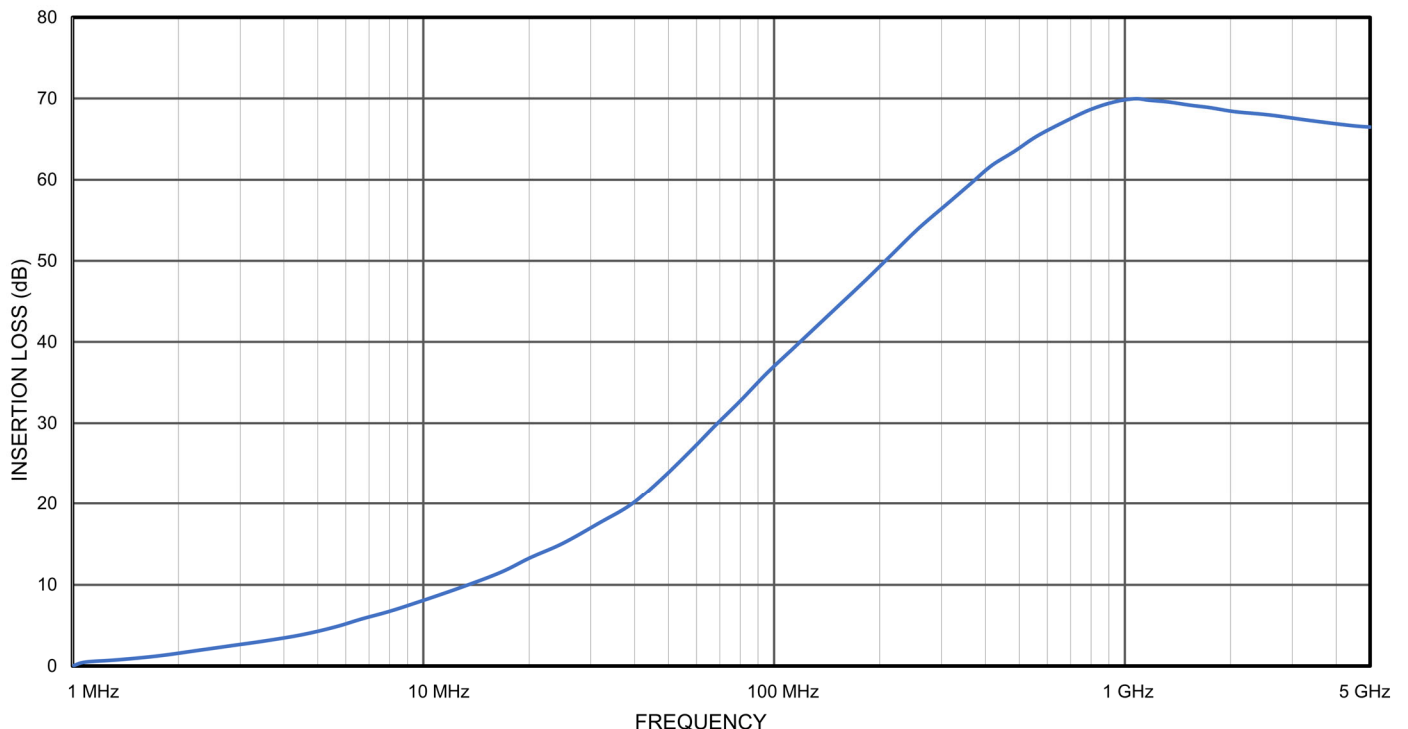
Electrical:

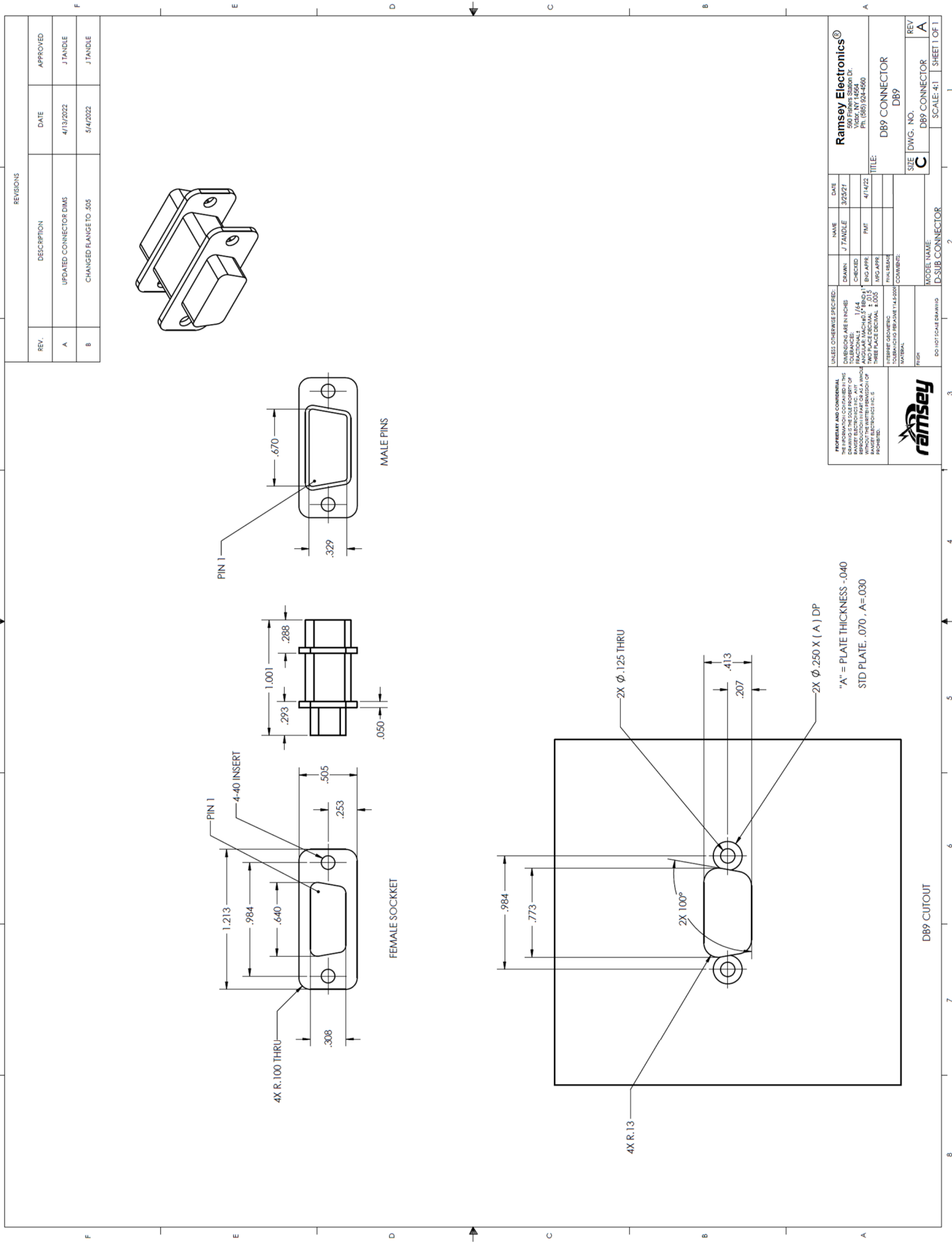
Working Voltage: 100VDC.
Maximum Current: 5 Amps.
RF Current: 0.3 Amps.
Contact Resistance: 10 Milliohms maximum.
Dielectric Withstanding Voltage: 300V.
Capacitance: 1000pF, +150% -0%.
Filter Type: Pi Filter.
3dB Cutoff Frequency: 3.2MHz maximum.
Filter Inductance: ~860nH between 100kHz and 1MHz.
Conductive Insertion Loss (Min): 17dB @ 50MHz.
27dB @ 100MHz.
58dB @ 500MHz.
70dB @ 1GHz.

Mechanical:

Pins: 9 Pins, Male/Female.
Operating Temperature: -55°C to +125°C.
Shell: Zinc or aluminum diecast, Nickel plated 150μ inches (3.8μm) min.
Pin Contacts: Copper Alloy, 15μ inches (.38μm) gold plated over nickel.
Socket Cup Contacts: Copper Alloy, 30μ inches (.76μm) gold plated over nickel.
Accepts 20 gauge wire.
Ground Plane: Brass, Solder plated.

Typical Insertion Loss





REVISIONS			
REV.	DESCRIPTION	DATE	APPROVED
A	UPDATED CONNECTOR DIMS	4/13/2022	J TANDLE
B	CHANGED RANGE TO .505	5/4/2022	J TANDLE

UNLESS OTHERWISE SPECIFIED:
 DIMENSIONS ARE IN INCHES
 DECIMALS ARE TO 1/16"
 FRACTIONS ARE TO 1/32"
 DIMENSIONS IN PARENTHESES ARE FOR INFORMATION ONLY
 TWO PLACE DECIMALS TO BE USED UNLESS OTHERWISE SPECIFIED
 DIMENSIONS TO BE USED FOR MANUFACTURING PURPOSES ONLY
 DIMENSIONS TO BE USED FOR MANUFACTURING PURPOSES ONLY

PROPERTY AND CONFIDENTIALITY:
 THIS DRAWING IS THE PROPERTY OF RAMSEY ELECTRONICS. IT IS TO BE USED ONLY FOR THE PROJECT AND QUANTITY SPECIFIED. ANY REUSE OR REPRODUCTION OF THIS DRAWING WITHOUT THE WRITTEN PERMISSION OF RAMSEY ELECTRONICS IS PROHIBITED.

RAMSEY ELECTRONICS
 1000 PARKWAY SOUTH
 SUITE 100
 WILMINGTON, DE 19800
 TEL: (302) 434-4900

DB9 CONNECTOR
 DB9

SIZE DWG. NO. DB9 CONNECTOR
 C
 REV. A
 SHEET 1 OF 1