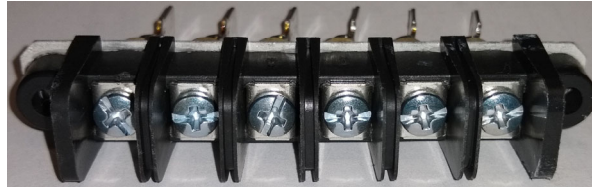
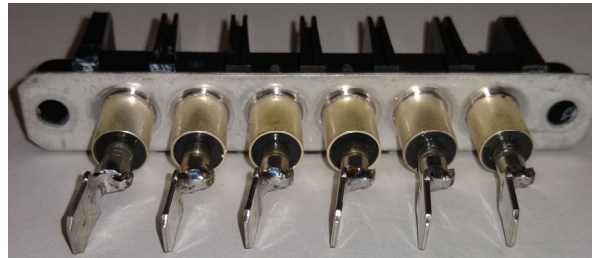


6 Terminal 2000pF-5200pF 250VAC Filtered Terminal Block

FILT24



External Side



Internal Side

Overview:

The FILT24 is a six terminal AC filtered terminal block. It is designed to provide RF/EMI filtering to AC power lines. The interface provides high insertion loss to connected circuits, making ideal for RF Shielded Test Enclosures or RF Screen Rooms

Applications:

- RF Shielded Test Enclosures or Screen Rooms.
- AC power.
- Switching circuits.
- Audio circuits.
- Video Circuits.
- Switching Circuits.
- Control Circuits.
- NTSC and PAL video.
- Low voltage AC.

Features:

- Provides RF Filtering to maintain an enclosures high RF isolation level while providing a feed-through path for electrical circuits.
- Easy connection via #6 screws, external, and 1/4 inch spade lugs, internal.



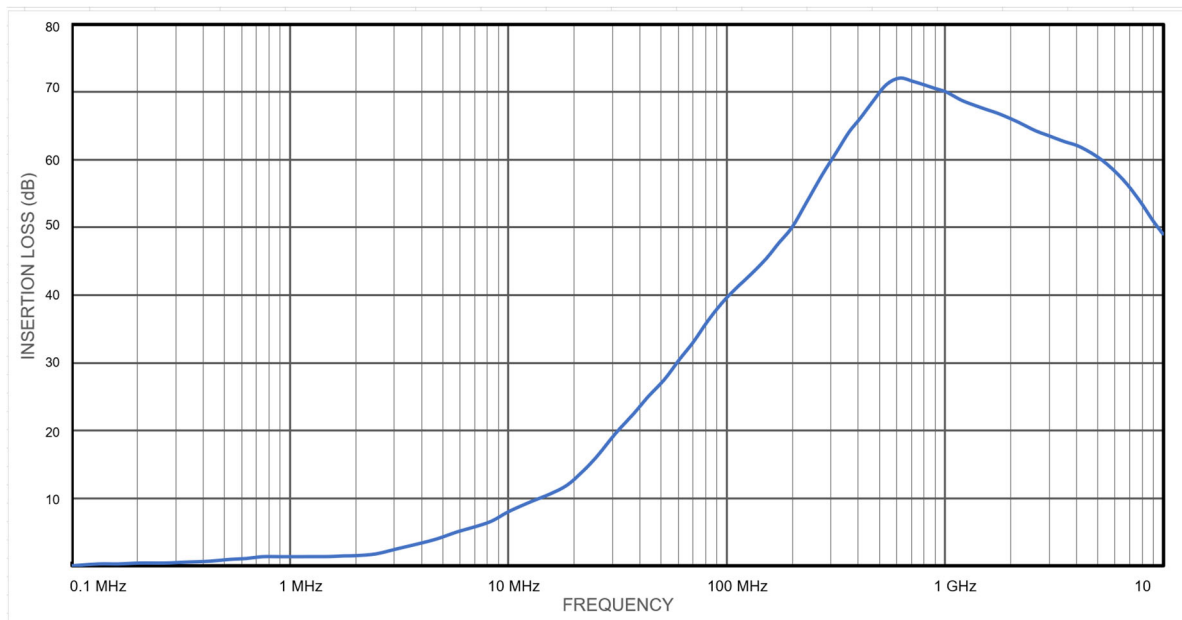
Specifications:

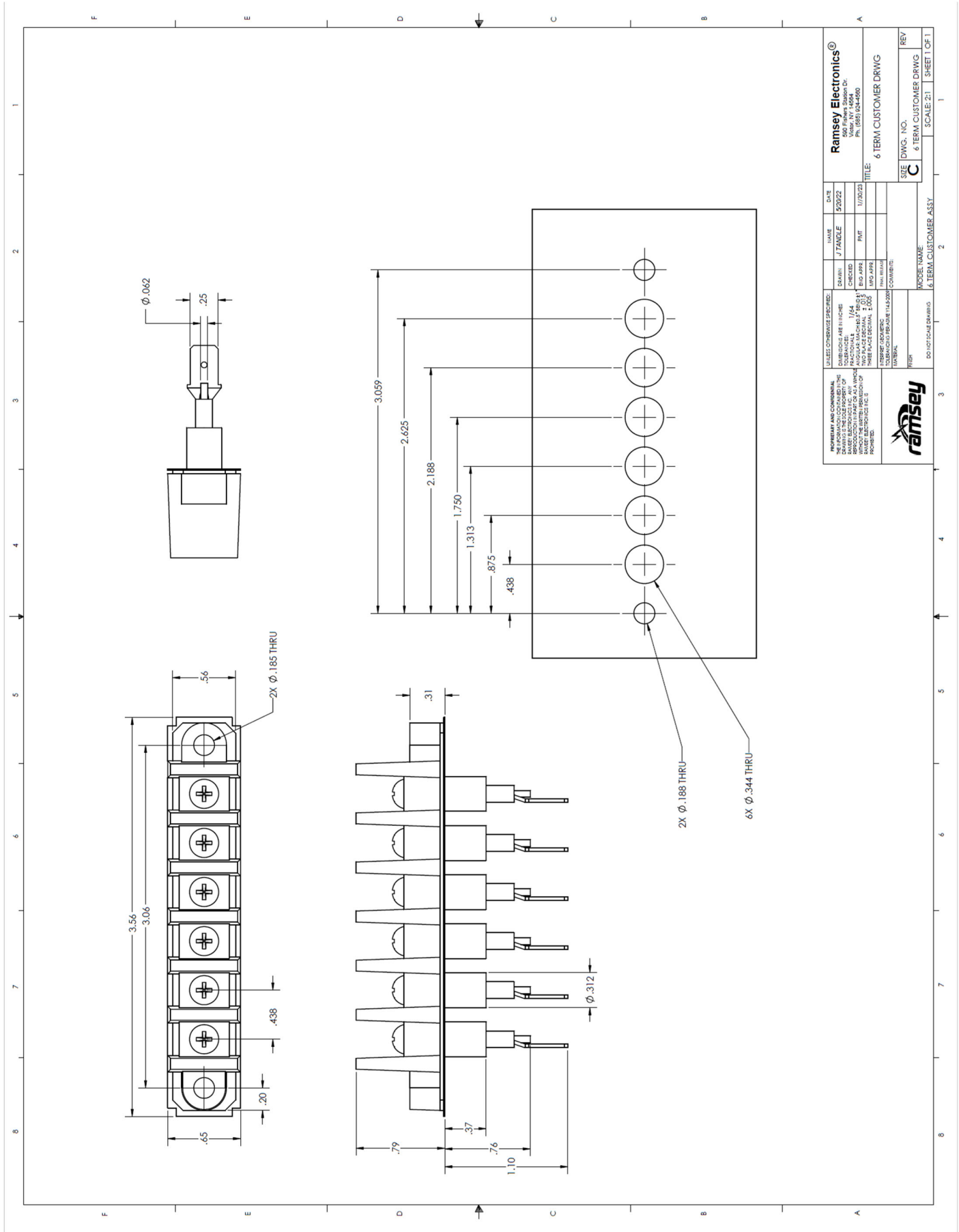
ELECTRICAL:

Working Voltage:	250VAC
Current:	20 Amps Maximum.
DC Resistance:	10 milliohms Maximum
Capacitance:	2000pF-5200pF Pi Filter
Dielectric Withstanding Voltage:	1500VAC @ 25°C
Minimum Insertion Loss, 50Ω System (No load):	4dB @ 5MHz 8dB @ 10MHz 13dB @ 20MHz 28dB @50 MHz 40dB @100 MHz 70dB @ 500 MHz 70dB @ 1GHz 60dB @ 5GHz

Number of Terminals:	6
Center Spacing:	0.438" (11.1mm)
Spade Size:	0.250" (6.35mm) AWG#12 max for 20 Amps
Wire Range:	12-22AWG.
Screw Size:	#6-32 Zinc Plated
Tightening Torque:	9in.-lbs max.
Mold Material:	Black, UL rated 94VO Thermoplastic
Operating Temperature:	-55°C to +105°C
Overall Length:	2.59" (65.8mm)
Mounting Centers:	2.19" (55.6mm)
Overall Width:	0.56" (14.3mm)

Typical Insertion Loss





The information in this datasheet, although believed to be accurate, is not to be taken as warranty for which Ramsey Electronics assumes legal responsibility. Ramsey Electronics reserves the right to make changes, corrections, and improvements to its products