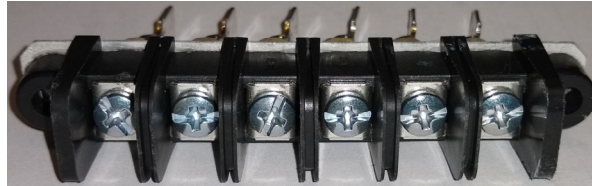


6 Terminal 2500pF-5200pF 100VDC Filtered Terminal Block

FILT8



External Side



Internal Side

Overview:

The FILT8 is a six pole DC filtered terminal block. It is designed to provide RF/EMI filtering to DC power lines. The interface provides high insertion loss to connected circuits, making ideal for RF Shielded Test Enclosures or RF Screen Rooms. It is used for DC Power, Audio, Base Band Video, Feedback circuits, Sense circuits, Switching circuits, and other low speed data.

Applications:

- RF Shielded Test Enclosures or Screen Rooms.
- DC power.
- Switching circuits.
- Audio circuits.
- Video Circuits.
- Switching Circuits.
- Control Circuits.
- NTSC and PAL video.M
- Low voltage DC.
- Low voltage AC.

Features:

- Provides RF Filtering to maintain an enclosures high RF isolation level while providing a feed-through path for electrical circuits.
- Easy connection via #6 screws, external, and 1/4 inch spade lugs, internal.



Specifications:

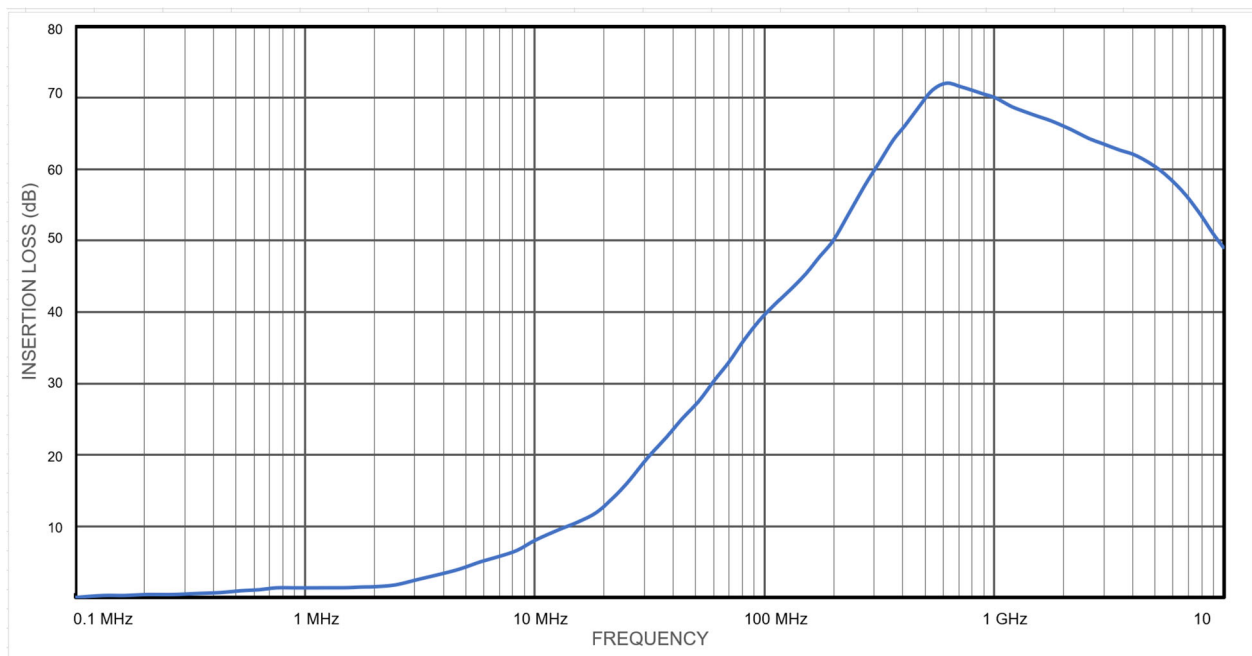
ELECTRICAL:

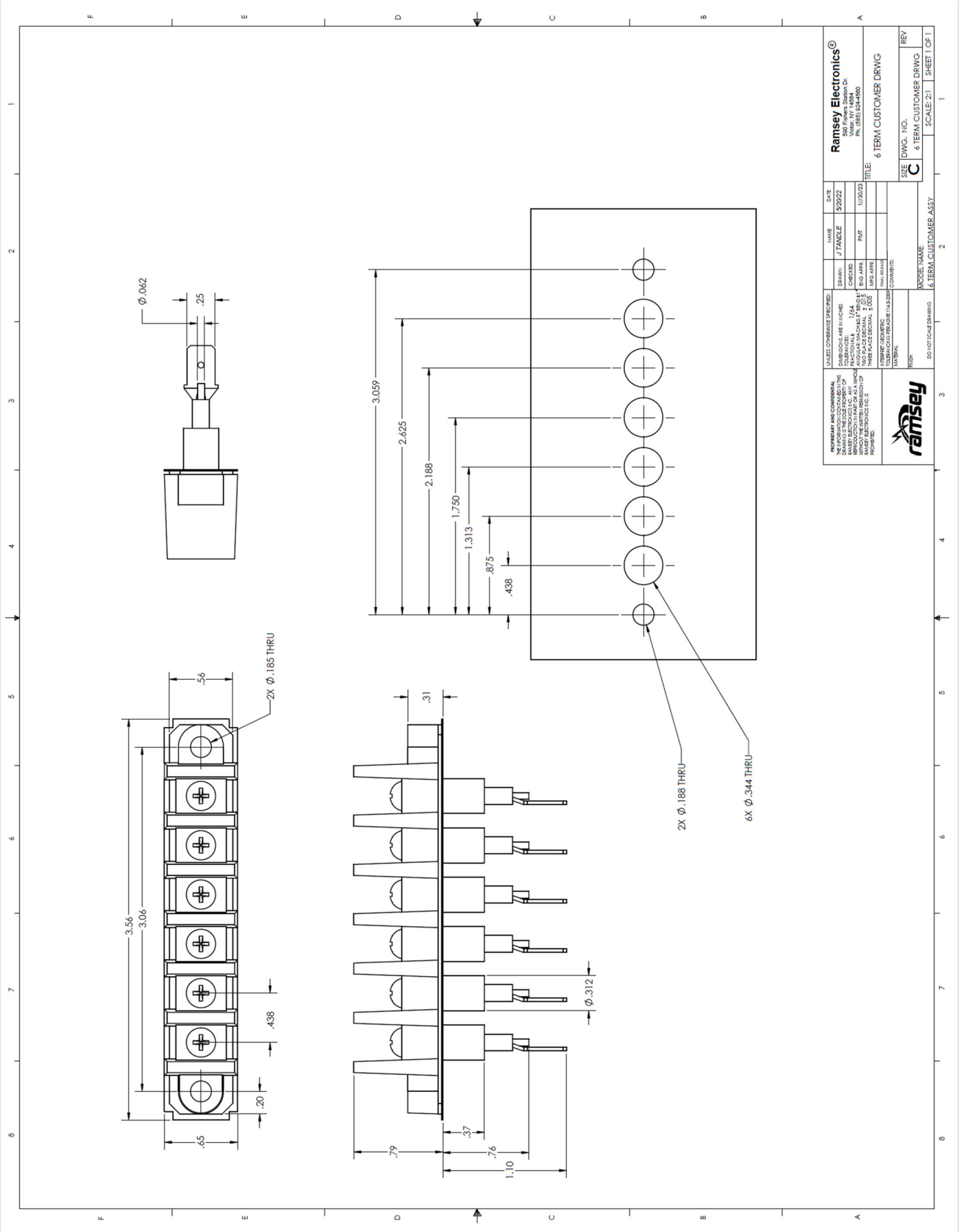
Working Voltage:	100VDC
Current:	20 Amps Maximum.
DC Resistance:	10 milliohms Maximum
Capacitance:	2500pF-5200pF Pi Filter
Dielectric Withstanding Voltage:	1700VDC
Conductive Insertion Loss (Typ):	4dB @ 5MHz 8dB @ 10MHz 13dB @ 20MHz 28dB @ 50 MHz 40dB @ 100 MHz 70dB @ 500 MHz 70dB @ 1GHz 60dB @ 5GHz

Mechanical:

Number of Terminals:	6
Center Spacing:	0.438" (11.1mm)
Spade Size:	0.250" (6.35mm) AWG#12 max for 20 Amps
Screw Size:	#6-32 Zinc Plated
Tightening Torque:	9in.-lbs max.
Mold Material:	Black, UL rated 94VO Thermoplastic
Operating Temperature:	-55°C to +105°C
Overall Length:	2.59" (65.8mm)
Mounting Centers:	2.19" (55.6mm)
Overall Width:	0.56" (14.3mm)

Typical Insertion Loss





PROPERTY AND CONVENTIONS: DRAWING IS THE PROPERTY OF RAMSEY ELECTRONICS INC. REPRODUCTION IN PART OR AS A WHOLE WITHOUT THE WRITTEN PERMISSION OF RAMSEY ELECTRONICS INC. IS PROHIBITED.		UNLESS OTHERWISE SPECIFIED: DIMENSIONS ARE IN INCHES DIMENSIONS IN PARENT PARENS TAKE PRECEDENCE OVER DIMENSIONS IN BRACKETS FINISH: UNLESS OTHERWISE SPECIFIED, ALL DIMENSIONS ARE TO BE HONED.		DATE: 5/2022 DRAWN BY: PWT DATE: 1/1/2023	SCALE: 2:1 SHEET 1 OF 1
RAMSEY ELECTRONICS 500 Palmer Station Dr. Palmdale, CA 93550 PH: (818) 624-4500		TITLE: 6 TERM CUSTOMER DRWG		SIZE: C DWG. NO.: 6 TERM CUSTOMER DRWG	REV: 1
PROJECT NAME: 6 TERM CUSTOMER ASSY		COMMENTS:		DO NOT SCALE DRAWING	

The information in this datasheet, although believed to be accurate, is not to be taken as warranty for which Ramsey Electronics assumes legal responsibility. Ramsey Electronics reserves the right to make changes, corrections, and improvements to its products and/or this document at anytime without notice.