



6 OUTLET INTERNATIONAL POWER STRIP, 250 VAC, 13A

58206



Overview:

The 58206 is a 6-outlet International Power Strip. It is for use in many countries throughout the world. It used for connecting single phase AC power to devices.

Applications:

- Used to connect devices requiring single phase AC power.
- Accepts AC power plugs from North America, Central America, South America, France, Germany, Denmark, Switzerland, Italy, UK, Thailand, India, South Africa, Israel, Japan, and China.

Features:

- 6 Outlets.
- 13 Amp.
- Illuminated Circuit Breaker Switch.
- Single Phase Power.
- Wall mountable.



Specifications:

ELECTRICAL:

Input Voltage:	250VAC.
Maximum Current:	13 Amps.
Frequency:	50/60Hz.
Number of Outlets:	6.
Outlets:	Multi-Country.
Outlet Polarity:	May be reversed depending on country.
Mating Plugs:	
North America, Central America:	NEMA 1-15P, NEMA 5-15P.
Japan:	NEMA 1-15P, NEMA 5-15P.
Europe:	CEE7/4*, CEE 7/16.
Germany:	CEE 7/4*, CEE 7/16.
France, Belgium, Poland:	CEE 7/7*, CEE7/4*, CEE7/6, CEE 7/16.
Switzerland:	SN 441011 TYPE 12.
Italy:	CEI 23-50.
UK:	BS1363/A, BS 546 (5 Amp Only).
South Africa, India:	BS 546.
South Africa, Brazil:	NBR 14136.
Australia, China, New Zealand:	TYPE I.
Cord:	1.5mm ² , HO5V VF-3G, 70°C (14 AWG).

MECHANICAL:

Operating Temperature:	23°F to +104°F (-5°C to +40°C).
Dimensions:	12.4" L x 2.0" W x 1.4" D (313.7mm L x 50.8mm W x 34.9mm D).
Weight:	0.8 lbs. (0.86 kg.)

CERTIFICATIONS:

UKCA, CE, Reach, RoHS3.

MATING PLUG's

* Ground Pin does not connect.



NEMA 1-15P



NEMA 5-15P



*CEE 7/7



*CEE 7/4



*CEE 7/6



CEE 7/16 P



Type 12



BS 546



BS1363/A



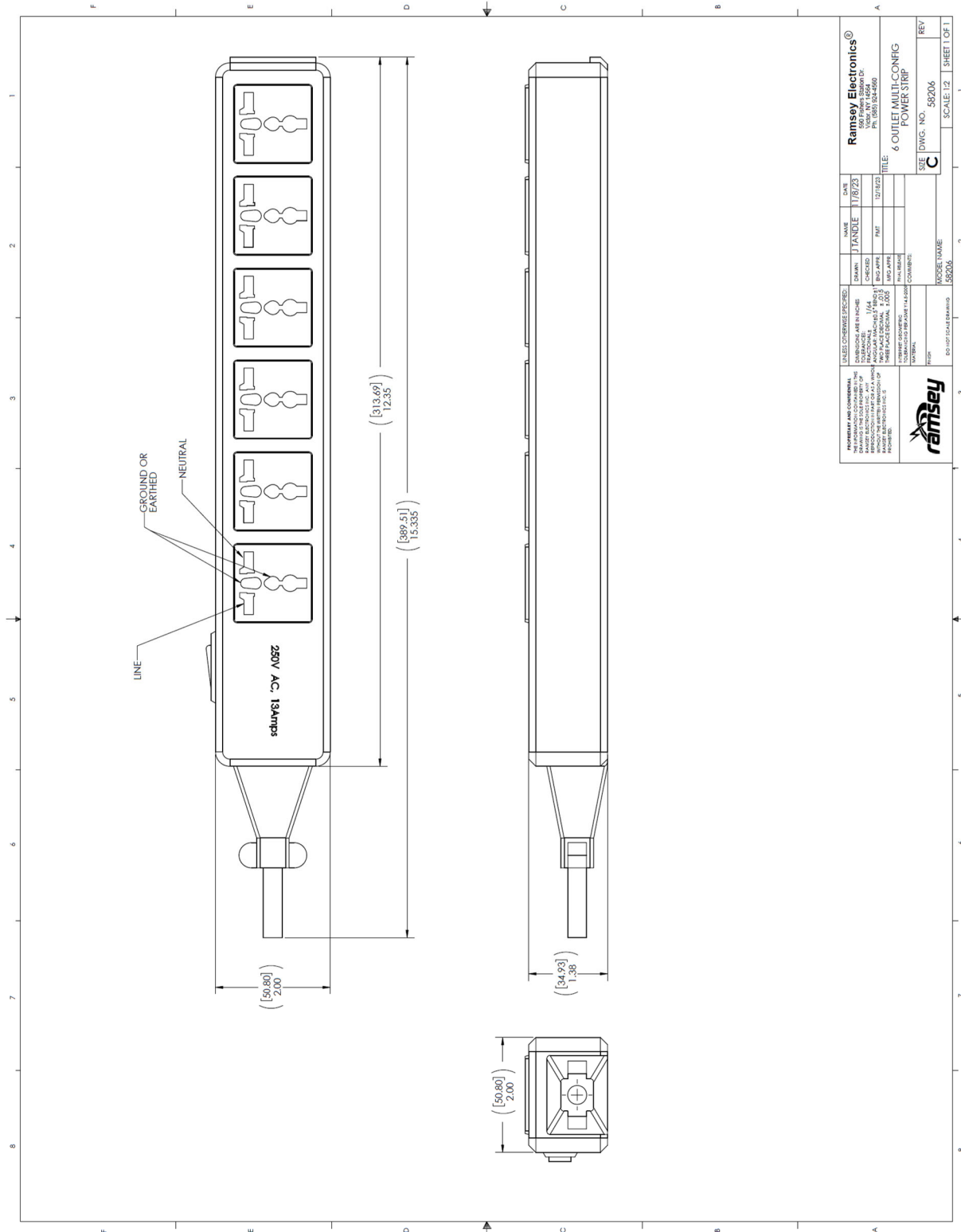
CEI 23-50



TYPE I



NBR 14136



Ramsey Electronics® 590 Fishers Station Drive Victor, NY 14564 Ph: (585) 924-4560		DATE: 1/8/23 DRAWN: J. FANDEL CHECKED: RMT ENG APPR: RMT MFG APPR: [] PWA NUMBER: [] COMMENTS: []	TITLE: 6 OUTLET MULTI-CONFIG POWER STRIP SIZE: DWG. NO. 58206 REV: C SCALE: 1:2 SHEET 1 OF 1
PRIMARY AND SECONDARY CONSTRUCTION: THIS DRAWING IS THE PROPERTY OF RAMSEY ELECTRONICS. IT IS TO BE USED ONLY FOR THE PROJECT AND LOCATION SPECIFICALLY IDENTIFIED HEREIN. NO PARTS OF THIS DRAWING ARE TO BE REPRODUCED OR TRANSMITTED IN ANY FORM OR BY ANY MEANS, ELECTRONIC OR MECHANICAL, INCLUDING PHOTOCOPYING, RECORDING, OR BY ANY INFORMATION STORAGE AND RETRIEVAL SYSTEM, WITHOUT THE WRITTEN PERMISSION OF RAMSEY ELECTRONICS.		MODEL NAME: 58206 DO NOT SCALE DRAWING	

The information in this datasheet, although believed to be accurate, is not to be taken as warranty for which Ramsey Electronics assumes legal responsibility. Ramsey Electronics reserves the right to make changes, corrections, and improvements to its products and/or this document at anytime without notice.