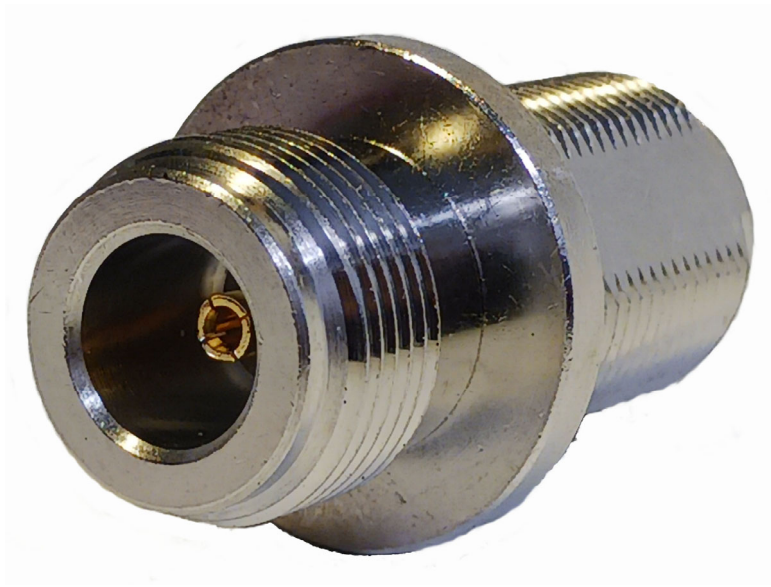

Type N to Type N Female Bulkhead Adapter

CONN104



Overview:

The CONN104 is a In-series, Straight, Type N to Type N Female Bulkhead adapter. The N type connector is a threaded connector used to join coaxial cables or coaxial cables to antennas.

Applications:

- Connecting RF signal paths to RF Shielded Test Enclosure or Screen Rooms.
- Connects N Type antenna.

Features:

- Frequency Range DC to 18GHz.
- Nickel Plated Brass Construction.
- Panel Mount.
- Wide Temperature Range.



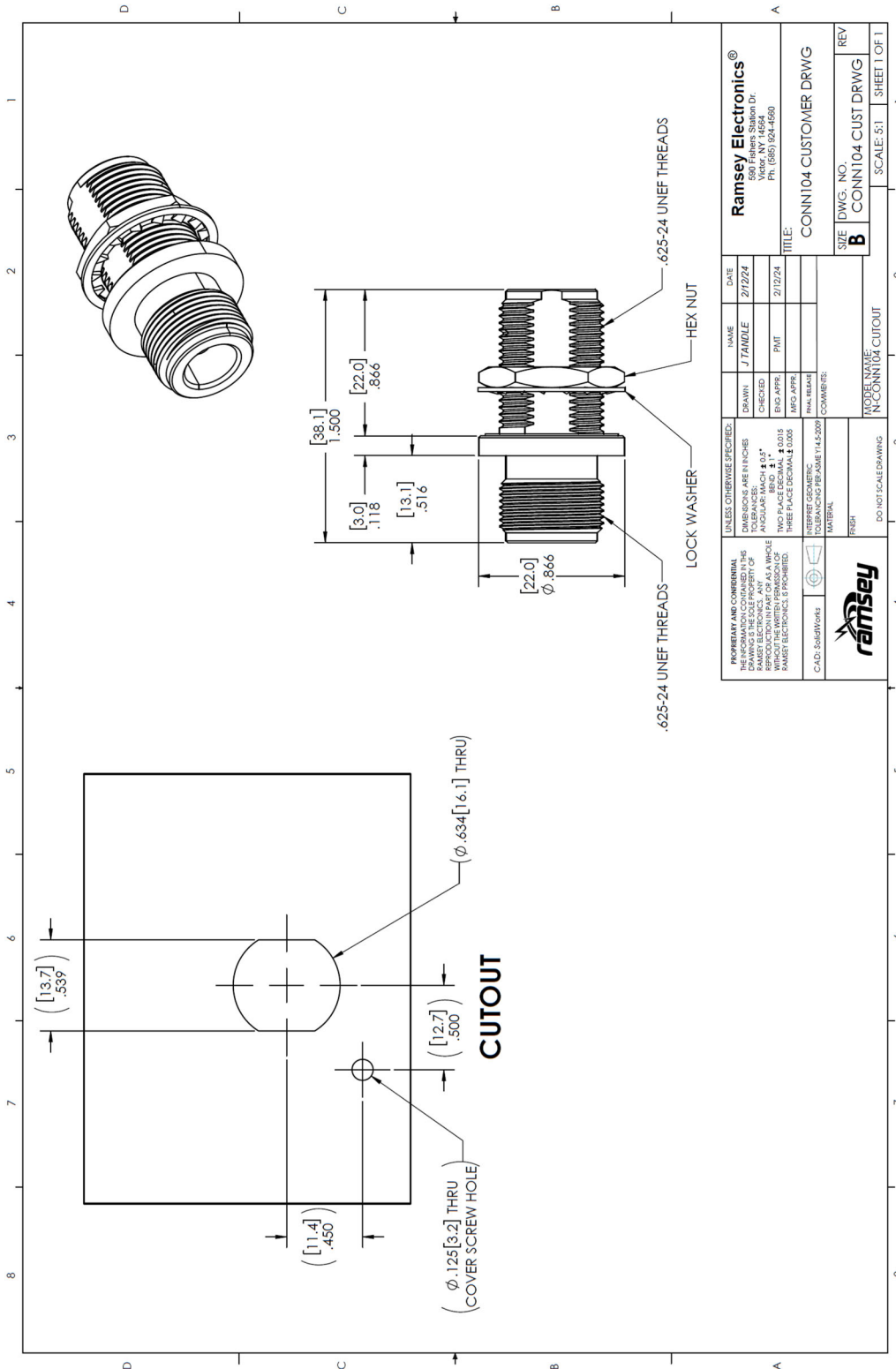
Specifications:

ELECTRICAL:

Impedance:	50 Ω .
Frequency Range:	DC - 11GHz.
Voltage Rating:	1500V _{PK} .
Contact Resistance:	$\leq 2m\Omega$.
Dielectric Withstanding Voltage:	1000VRMS.

Mechanical:

Operating Temperature:	-40°F to 185°F (-40°C to +85°C).
Body:	Nickel plated brass
Center Pin:	Phosphor Bronze, Gold Plated.
Insulator:	PTFE.
Mounting:	Panel Mount, Bulkhead.
Max Panel Thickness:	0.650 Inches (16.5mm)
Threads:	0.625-24UNEF-2A.
Durability:	500 Mating Cycles Minimum.



PROPERTY AND CONFIDENTIALITY: THIS DRAWING IS THE PROPERTY OF RAMSEY ELECTRONICS. ANY REPRODUCTION OR TRANSMISSION WITHOUT THE WRITTEN PERMISSION OF RAMSEY ELECTRONICS IS PROHIBITED.		UNLESS OTHERWISE SPECIFIED: DIMENSIONS ARE IN INCHES ANGULAR: MACH ± 0.5° TWO PLACE DECIMAL ± 0.015 THREE PLACE DECIMAL ± 0.005 FINISH: AS SHOWN TOLERANCING PER ASME Y14.5-2009		DRAWN: J.TANDLE CHECKED: P.M.T. ENG APPR: P.M.T. MFG APPR: FINAL RELEASER:	DATE: 2/12/24 TITLE: CONN104 CUSTOMER DRWG
CAD: SOLIDWORKS		INTERPRET GEOMETRIC TOLERANCING PER ASME Y14.5-2009		COMMENTS:	
RAMSEY ELECTRONICS® 590 Fishers Station Dr. Victor, NY 14564 PH: (585) 924-4560		MODEL NAME: N-CONN104 CUTOUT SCALE: 5:1 SHEET 1 OF 1		REV: B DWG. NO.: CONN104 CUST DRWG	

The information in this datasheet, although believed to be accurate, is not to be taken as warranty for which Ramsey Electronics assumes legal responsibility. Ramsey Electronics reserves the right to make changes, corrections, and improvements to its products and/or this document at anytime without notice.