

---

## SMA Female to SMA Female Bulkhead Adapter

### CONN390



#### Overview:

The CONN390 is an in-series, Straight, SMA Female to SMA Female Bulkhead adapter. This connector will allow for connecting to cables or antennas using male SMA, 3.5mm, and 2.92mm (K) connectors.

#### Applications:

- Connecting RF signal paths to RF Shielded Test Enclosure or Screen Rooms.
- Connects to Male SMA, 3.5mm, or 2.92mm Connectors.
- Easy connection to standard SMA Cables and SMA Antennas.

#### Features:

- Frequency Range DC to 18GHz, usable to 26GHz..
- Gold Plated Brass Construction.
- Panel Mount.
- Wide Temperature Range.



## Specifications:

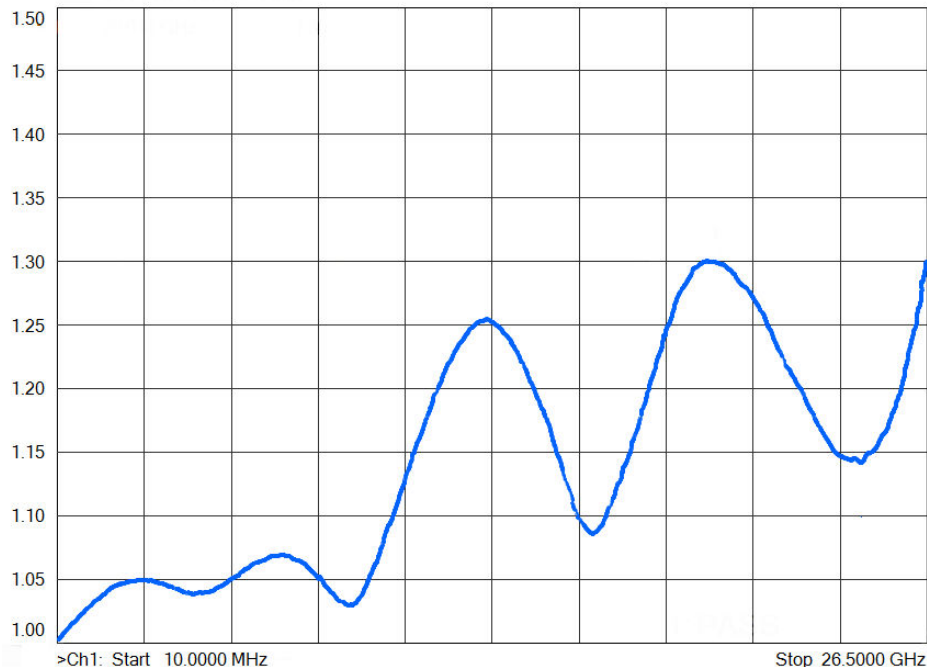
### ELECTRICAL:

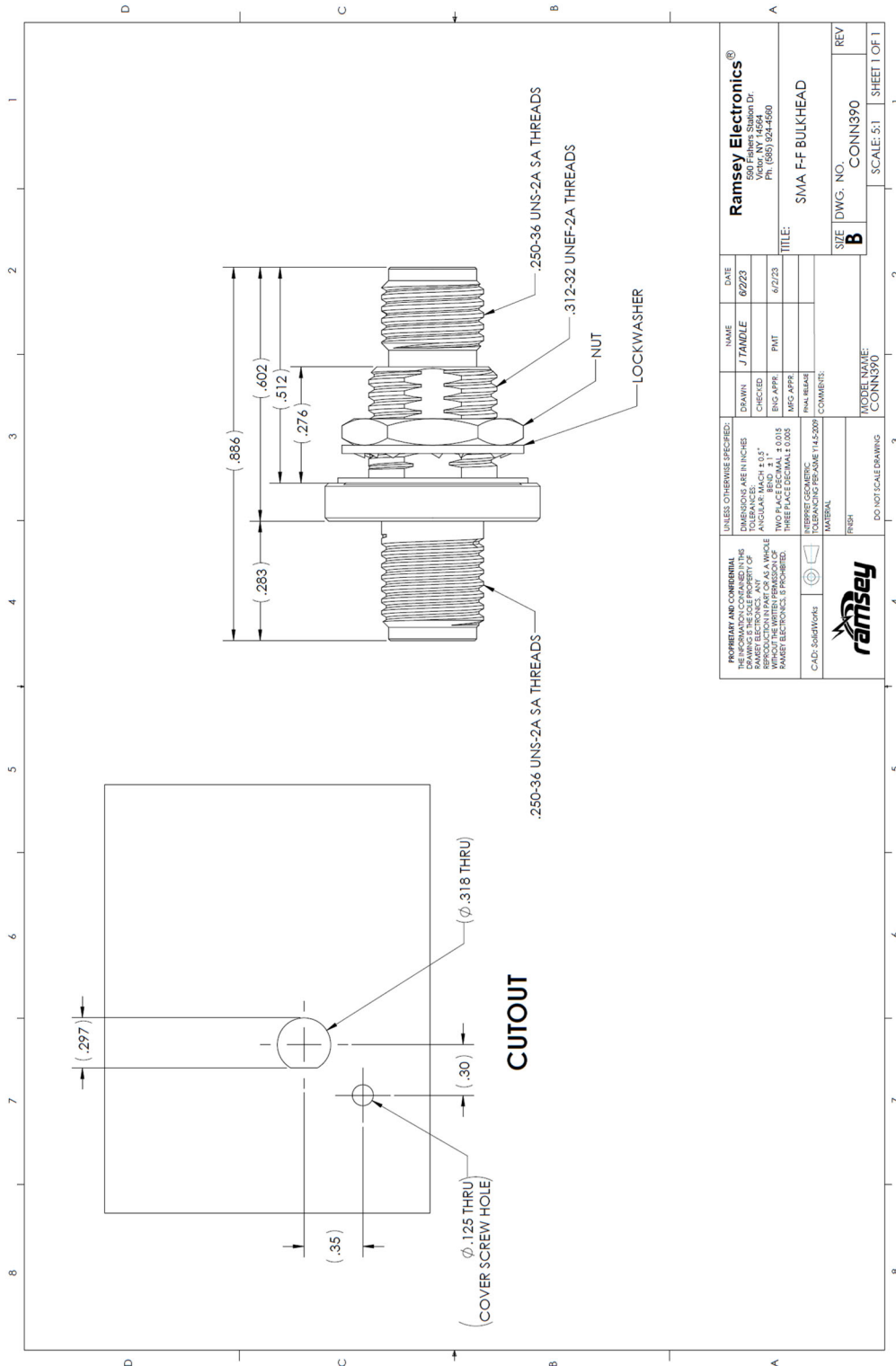
Impedance:	50 $\Omega$ .
Frequency Range:	DC - 18GHz.
VSWR:	1.3:1 Max.
Return Loss:	-17.7dB Max.
Voltage Rating:	$\leq$ 350VRMS.
Contact Resistance:	$\leq$ 2m $\Omega$ .
Dielectric Withstanding Voltage:	1000VRMS.

### Mechanical:

Operating Temperature:	-85°F to 329°F (-65°C to +165°C).
Body:	Gold Plated Brass.
Hex Nut:	Gold Plated Brass.
Lock Washer:	Gold Plated Brass.
Pin Contact:	Beryllium Copper, Gold Plated.
Insulator:	PTFE.
Mounting:	Panel Mount, Bulkhead.
Max Panel Thickness:	0.170 Inches (4.3mm)
Mounting Threads:	5/16-32 UNEF.
Mounting Nut Torque:	100 in-lbs. (11.3 N-m)
Mating Threads:	1/4-36 UNS.
Mating connector Torque:	8 in-lbs (0.9N-m).
Durability:	500 Mating Cycles Minimum.

**Typical VSWR vs Frequency Plot**





The information in this datasheet, although believed to be accurate, is not to be taken as warranty for which Ramsey Electronics assumes legal responsibility. Ramsey Electronics reserves the right to make changes, corrections, and improvements to its products and/or this document at anytime without notice.