

---

## TNC Female to TNC Female Bulkhead Adapter

### CONN60



#### Overview:

The CONN60 is an In-Series, Straight, TNC Female to TNC Female Bulkhead adapter. This connector will allow for connecting to cables using male TNC connectors.

#### Applications:

- Connecting RF signal paths to RF Shielded Test Enclosure or Screen Rooms.
- Connects to Male TNC Connectors.
- Easy connection to standard TNC Cables and TNC Antennas.

#### Features:

- Frequency Range DC to 11GHz.
- Nickel Plated Brass Construction.
- Panel Mount.



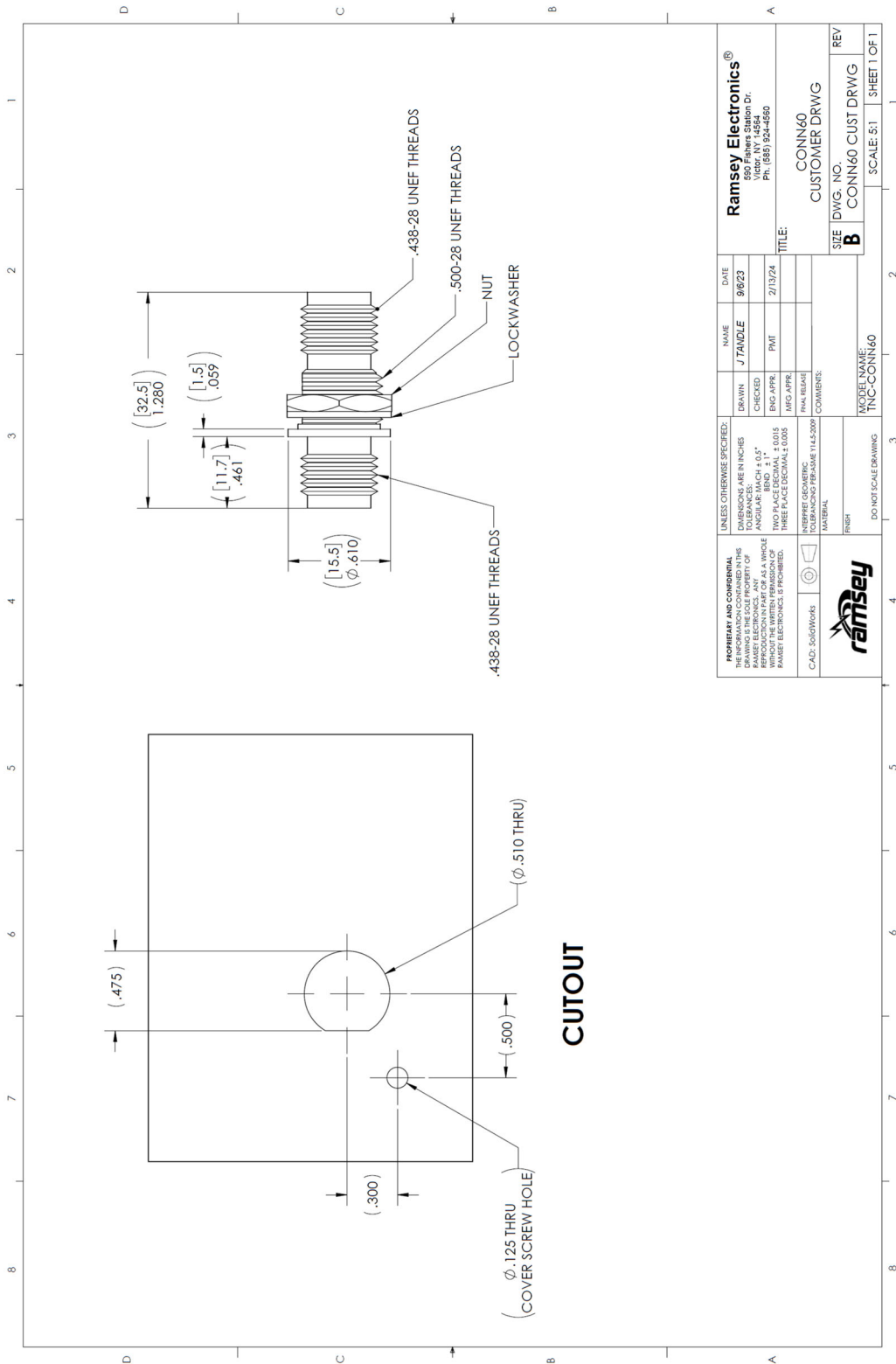
**Specifications:**

**ELECTRICAL:**

Impedance: 50  $\Omega$ .  
Frequency Range: DC - 11GHz.

**Mechanical:**

Body: Nickel Plated Brass.  
Hex Nut: Nickel Plated Brass.  
Pin Contact: Brass, Gold Plated.  
Insulator: Delrin.  
Mounting: Panel Mount, Bulkhead.  
Max Panel Thickness: 0.170 Inches (4.3mm)  
Mounting Threads: 7/16-28 UNEF.



<b>PROPRIETARY AND CONFIDENTIAL</b> THE INFORMATION CONTAINED IN THIS DRAWING IS THE PROPERTY OF RAMSEY ELECTRONICS. ANY REPRODUCTION IN PART OR AS A WHOLE WITHOUT THE WRITTEN PERMISSION OF RAMSEY ELECTRONICS IS PROHIBITED.		UNLESS OTHERWISE SPECIFIED: DIMENSIONS ARE IN INCHES TOLERANCES ARE: FRACTIONS DECIMALS HOLE PLACES DECIMALS HOLE PLACES DECIMALS HOLE PLACES DECIMALS	DATE 9/6/23	NAME J TANDLE	DATE 2/13/24	<b>Ramsey Electronics®</b> 590 Fishers Station Dr. Victor, NY 14564 Ph: (585) 924-4560	
DRAWN	CHECKED	ENG APPR	MG APPR	FINAL RELEASE	COMMENTS:	TITLE: CONN60 CUSTOMER DRWG	
SCALE: 5:1	SHEET 1 OF 1	MODEL NAME: TNC-CONN60	SIZE B	DWG. NO. CONN60 CUST DRWG	REV		

The information in this datasheet, although believed to be accurate, is not to be taken as warranty for which Ramsey Electronics assumes legal responsibility. Ramsey Electronics reserves the right to make changes, corrections, and improvements to its products and/or this document at anytime without notice.