

3 OUTLET INTERNATIONAL POWER STRIP, 250 VAC, 16A

PS112



Overview:

The PS112 is a 3-outlet International Power Strip. It is for use in many countries throughout the world. It used for connecting single phase AC power to devices.

Applications:

- Used to connect devices requiring single phase AC power.
- Accepts AC power plugs from North America, Central America, South America, France, Germany, Denmark, Switzerland, Italy, UK, Thailand, India, South Africa, Israel, Japan, and China.

Features:

- 3 Outlets.
- 16 Amp.
- Single Phase Power.
- Wall mountable.



Specifications:

ELECTRICAL:

Maximum Input Voltage:	250VAC.
Maximum Current:	16 Amps.
Frequency:	50/60Hz.
Number of Outlets:	3.
Outlets:	Multi-Country.
Outlet Polarity:	May be reversed depending on country.
Mating Plugs:	
North America, Central America:	NEMA 1-15P, NEMA 5-15P.
Japan:	NEMA 1-15P, NEMA 5-15P.
Europe:	CEE7/4*, CEE 7/16.
Germany:	CEE 7/4*, CEE 7/16.
France, Belgium, Poland:	CEE 7/7*, CEE7/4*, CEE7/6, CEE 7/16.
Switzerland:	SN 441011 TYPE 12.
Italy:	CEI 23-50.
UK:	BS1363/A, BS 546.
South Africa, India:	BS 546.
South Africa, Brazil:	NBR 14136.
Australia, China, New Zealand:	TYPE I.
Cord:	1.5mm ² , HO5V VF-3G, 70°C (14 AWG).

MECHANICAL:

Operating Temperature:	23°F to +104°F (-5°C to +40°C).
Dimensions:	6.5" L x 2.0" W x 1.4" D (163.8mm L x 50.3mm W x 35.0mm D).
Weight:	0.4 lbs. (0.18 kg.)

CERTIFICATIONS:

CE, Reach, RoHS2.

MATING PLUG's

* Ground Pin does not connect.



NEMA 1-15P



NEMA 5-15P



*CEE 7/7



*CEE 7/4



*CEE 7/6



CEE 7/16 P



Type 12



BS 546



BS1363/A



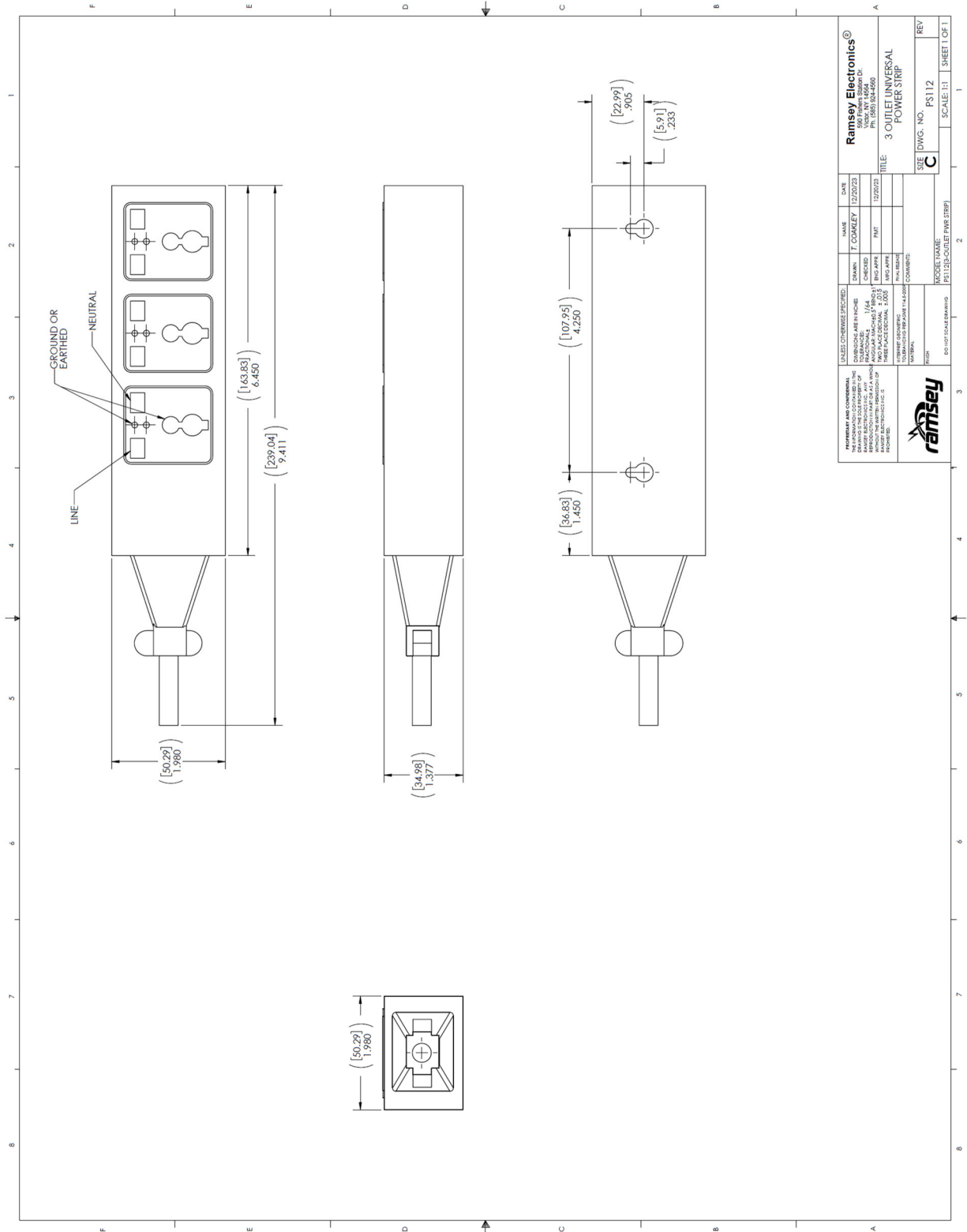
CEI 23-50



TYPE I



NBR 14136



The information in this datasheet, although believed to be accurate, is not to be taken as warranty for which Ramsey Electronics assumes legal responsibility. Ramsey Electronics reserves the right to make changes, corrections, and improvements to its products and/or this document at anytime without notice.