



SMB Male to SMB Male Bulkhead Adapter

CONN283



Overview:

The CONN283 is an in-series, Straight, SMB Male to SMB Male Bulkhead adapter. This adapter will allow for connecting to cables or antennas using female SMB connectors.

Applications:

- Connecting RF signal paths to RF Shielded Test Enclosure or Screen Rooms.
- Easy connection to standard SMB Cables and SMB Antennas.

Features:

- Frequency Range DC to 4GHz.
- Easy Connection.
- Panel Mount.
- Wide Temperature Range.



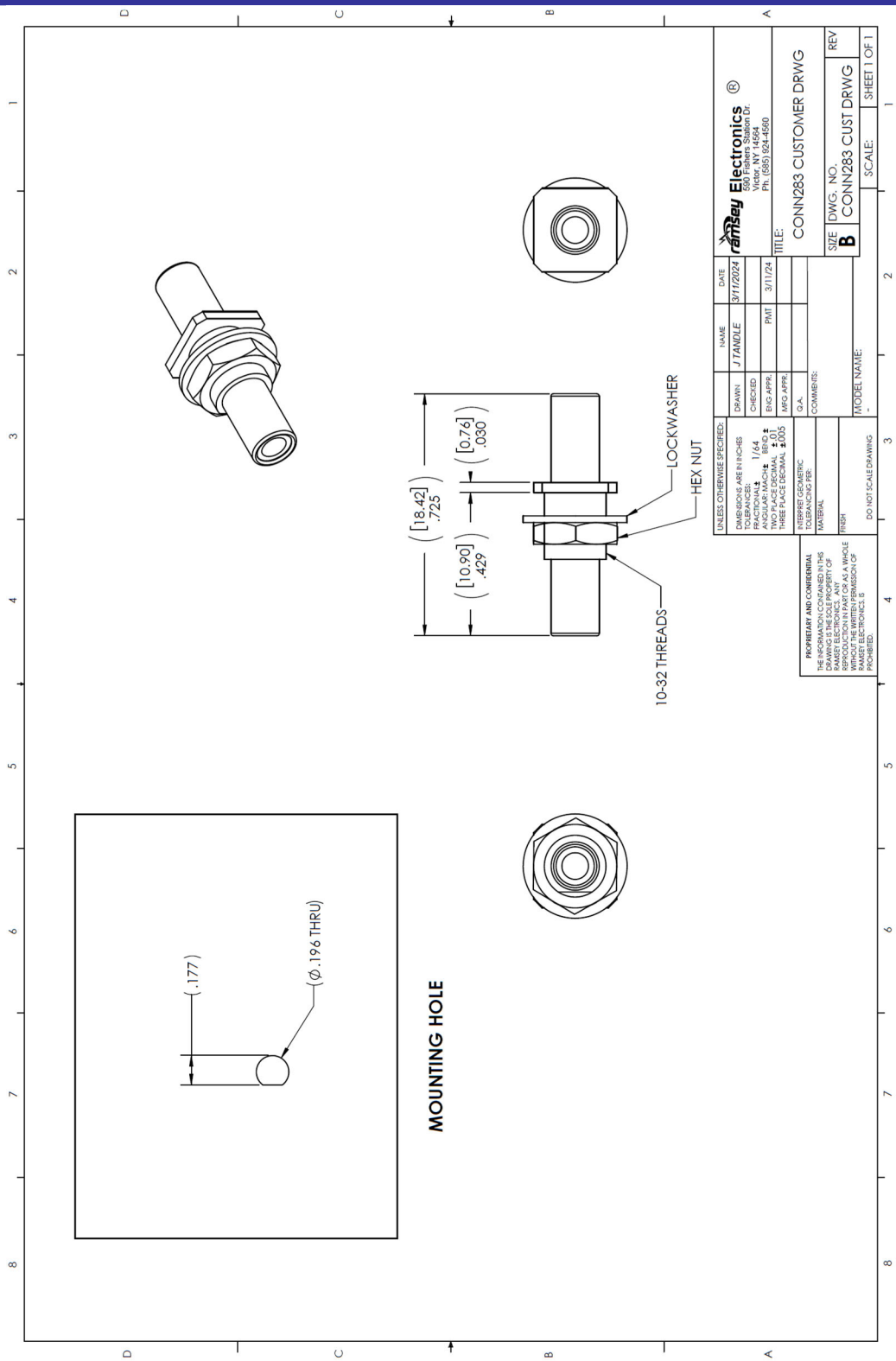
Specifications:

ELECTRICAL:

Impedance:	50 Ω .
Frequency Range:	DC - 4GHz.
VSWR:	1.3:1 Max.
Return Loss:	-17.7dB Max.
Voltage Rating:	\leq 335VRMS.

Mechanical:

Operating Temperature:	-85°F to 329°F (-65°C to +165°C).
Body:	Nickel Plated Brass.
Pin Contact:	Brass, Gold Plated.
Insulator:	PTFE.
Mounting:	Panel Mount, Bulkhead.
Max Panel Thickness:	0.115 Inches (2.9mm)
Mounting Threads:	#10-32.



The information in this datasheet, although believed to be accurate, is not to be taken as warranty for which Ramsey Electronics assumes legal responsibility. Ramsey Electronics reserves the right to make changes, corrections, and improvements to its products and/or this document at anytime without notice.