

AC to 12VDC Power Adapter

PS105



Overview

The PS105 is an AC to 12VDC switching power supply that is compatible with most world power systems. It provides a regulated 12VDC at up to 2.0 amps making it a 24 watt power supply. It also carries certifications and approvals to be used in most of the world.

Applications

The PS105 is used to power most of the Ramsey interfaces that require DC power. The PS105 is included with 60mm DC Fans, 120mm DC Fans, STEUSB312, STEETHD10G, and STEHR210.

Features

- Input AC from 90VAC to 240VAC.
- Five World Plugs for AC input.
- Common 2.1mm x 5.5mm DC power plug.
- Many world certifications and approvals.
- Over voltage and current protection.



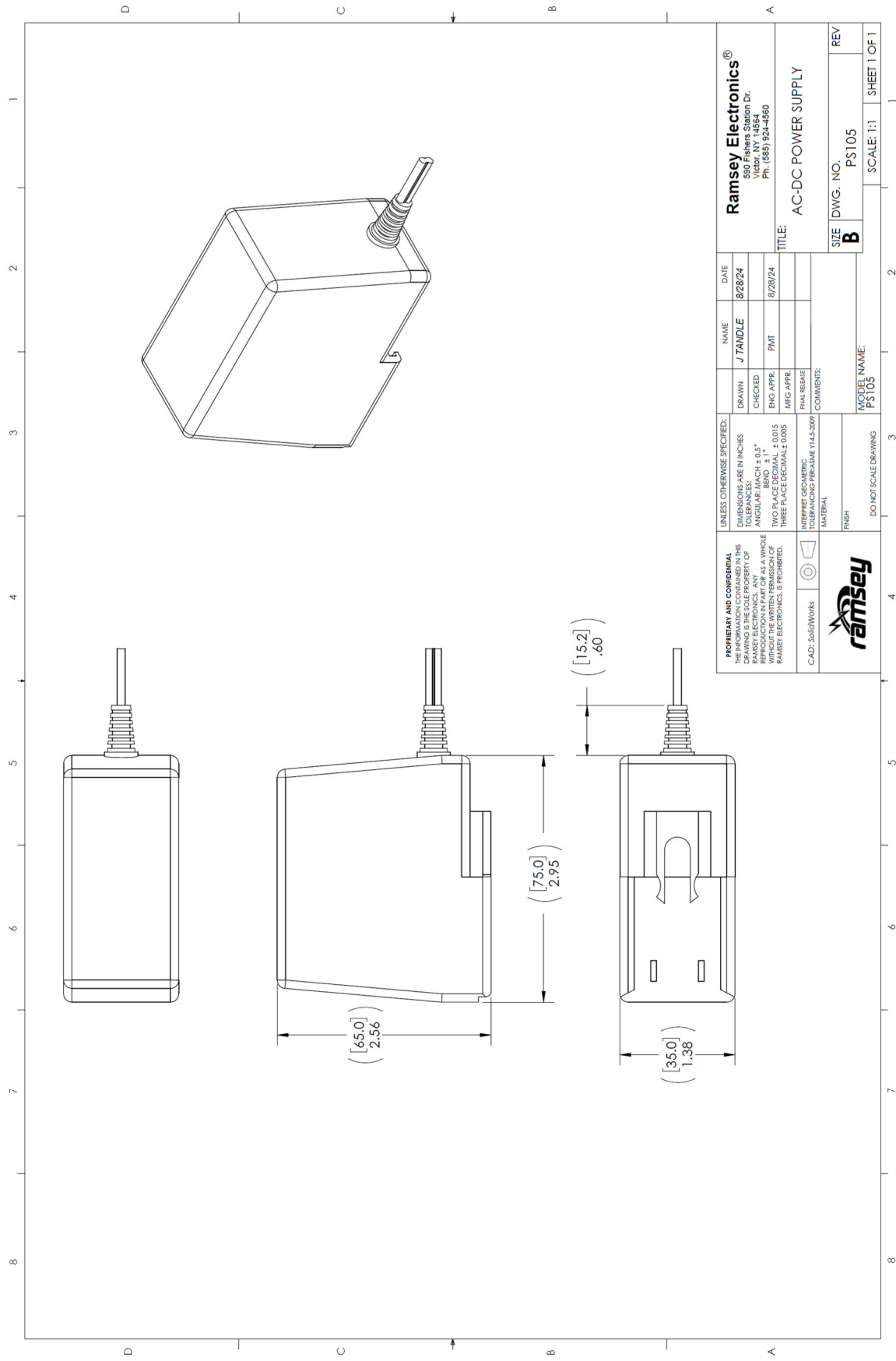
PS105 Specifications

Power Supply Specifications *:

Ramsey Part Number:	PS105.
Description:	AC-DC Switching Power Supply.
Output Voltage:	12VDC.
Output Current:	2 Amps Maximum.
Output Power Max:	24 Watts Maximum.
Output Connector:	5.5mm x 2.1mm DC Plug, Center Positive.
Input Voltage:	90 to 264VAC.
Input Frequency:	47 to 63Hz.
Input Current:	0.58 Amps.
Input Connector:	Interchangeable Blades: US, Europe, United Kingdom, Australia, China.
Efficiency Level:	VI.
Operating Temperature:	32°F to 104°F (0° to 40°C).
Power Cord Length:	60 inches (1,500mm)

Safety Approvals:	62368, UL/cUI, EN, J, AS/NZS, CE, UKCA.
EMI/EMC:	FCC Part 15 Class B, EN 55032, EN55024, EN 50581.
RoHS Compliant:	Yes.

* Due to availability, may be substituted without notice.



Proprietary and Confidential The information in this drawing is the sole property of Ramsey Electronics. Any reproduction or use of this drawing without the written permission of Ramsey Electronics is prohibited.		UNLESS OTHERWISE SPECIFIED: DIMENSIONS ARE IN INCHES TOLERANCES: ANGULAR: MACH ± 0.5° HOLE: ± 0.015 TWO PLACE DECIMAL ± 0.005 THREE PLACE DECIMAL ± 0.005		DRAWN: J. TANDLER CHECKED: [] ENG. APPR. [] MFG. APPR. [] FINAL RELEASE COMMENTS: []		DATE: 8/28/24 8/29/24		Ramsey Electronics® 650 Fishers Station Dr. Victor, NY 14564 Ph. (660) 924-6560	
C.A.D.: SolidWorks		INTERPRET GEOMETRIC FEATURES PER ASME Y14.5-2009		MATERIAL: []		FINISH: []		TITLE: AC-DC POWER SUPPLY SIZE: B DWG. NO.: PS105 SCALE: 1:1 SHEET 1 OF 1	
		DO NOT SCALE DRAWING		MODEL NAME: PS105		REV: []		REV: []	

The information in this datasheet, although believed to be accurate, is not to be taken as warranty for which Ramsey Electronics assumes legal responsibility. Ramsey Electronics reserves the right to make changes, corrections, and improvements to its products and/or this document at anytime without notice.