

24VDC 160 WATT SWITCHING POWER SUPPLY

PS111



Overview

The PS111 is an AC to DC switching desktop style power supply. It has a single output rated at 24VDC, 6.67 amps, 160 Watts. The AC power inlet is a 60320-C14 allowing for easy connection to different world AC power mains systems. The DC output connector is a 4 pin Power DIN.

Applications

Powers Ramsey Electronics STEUSB3CC interface.
Power devices requiring 24VDC up to 6.67 amps.

Features

- Works with most world power systems.
- 3-pole AC power inlet IEC60320-C14.
- 4 Pin Power DIN output connector.
- Wide working temperature range, -30 to +70°C.
- LED Power indicator.
- Fully enclosed plastic case.



PS111 Power Supply Specifications

Output Power Specifications:

Voltage: 24VDC Typical.
Current: 6.67 Amps Maximum.
Power: 160 Watts Maximum.
Ripple and Noise: 150mVp-p.
Load Regulation: $\pm 3.0\%$ Typical.
Connector: 4 Pin Power DIN.

Input Power Specifications:

Voltage: 85 to 264VAC.
Frequency: 47 to 63Hz.
Current: 1.85A @ 115VAC, 1A @ 230VAC.
Inrush Current: 95Amps @115VAC, 120A @ 230VAC, cold start.
60 Amps Maximum @230VAC, full load, 25°C, cold start.
Leakage Current: 0.75 Milliamps @ 240VAC.
Connector: IEC60320-C14

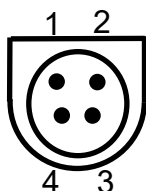
Protections:

Over Voltage Protection: 105-135% Rated Output Voltage.
Over Power Protection: 105-150% Rated Power.

Mechanical:

Working Temperature: -30 to +70°C.
Storage Temperature: -40 to +85°C.
Working Humidity: 20 to 90% RH non-condensing.
Storage Humidity: 10 to 95% RH non-condensing.
Vibration: 10 ~ 500Hz, 2G 10min./1cycle, period for 60min. each along X, Y, Z axes175

Output Connector Pinout:



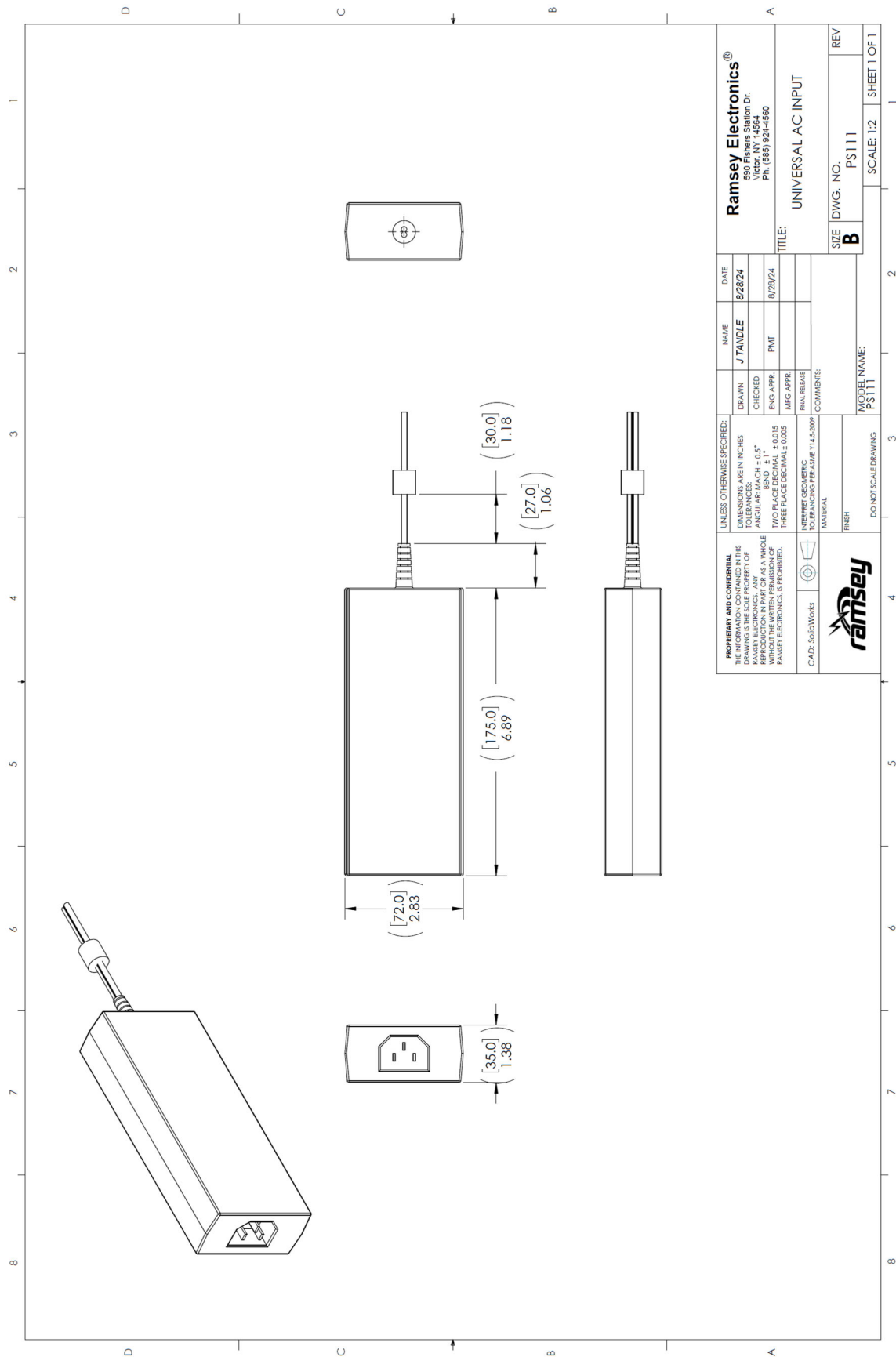
Pin #	Output
1	+24
2	Ground *
3	Ground *
4	+24

* Tied to AC input ground on IEC60320-C14 ground pin.



Safety & Compliance:

Safety Approvals:	UL62368-1, CSA C22.2 No.62368-1, TUV BS EN/EN62368-1, BSMI CNS14336, CCC GB4943.1, PSE J62368-1,AS/NZS 60950.1, BIS IS13252, KC K60950-1, EAC TP TC 004 approved.
Withstanding Voltage:	I/P-O/P: 3KVAC I/P-FG: 2KVAC O/P-FG:SHORT
Insulation Resistance:	I/P-O/P:100M Ohms / 500VDC / 25°/ 70% RH.
Conducted Emission:	BS EN/EN55032(CISPR32), FCC PART 15 / CISPR22 CAN ICES-3(B)/NMB-3(B), GB17625.1 EAC TP TC020,MSIP KN32; CLASS B.
Radiated Emission:	BS EN/EN55032(CISPR32), FCC PART 15 / CISPR22 CAN ICES-3(B)/NMB-3(B), CNS13438, GB17625.1 EAC TP TC 020, MSIP KN32; CLASS B.
Harmonic Current:	BS EN/EN61000-3-2, GB9254; CLASS A.
ESD:	BS EN/EN61000-4-2; Level 4, 15KV air; Level 4, 8KV contact.
RF Field Susceptibility:	BS EN/EN61000-4-3; Level 2, 1KV.
Surge Susceptibility:	BS EN/EN61000-4-5; Level 3, 1KV/Line-Line , 2KV/Line-FG.
Conducted Susceptibility:	BS EN/EN61000-4-6; Level 2, 3V.



PROPRIETARY AND CONFIDENTIAL THE INFORMATION CONTAINED IN THIS DRAWING IS THE SOLE PROPERTY OF RAMSEY ELECTRONICS. IT IS TO BE USED FOR REPRODUCTION IN PART OR AS A WHOLE WITHOUT THE WRITTEN PERMISSION OF RAMSEY ELECTRONICS. IS PROHIBITED.		UNLESS OTHERWISE SPECIFIED: DIMENSIONS ARE IN INCHES TOLERANCES: FRACTIONS: ± 0.005 DECIMALS: ± 0.015 ANGULAR: ± 0.5° HOLE POSITION: ± 0.015 TWO PLACE DECIMAL ± 0.015 THREE PLACE DECIMAL ± 0.005		DATE 8/28/24	NAME J TANDLE	DATE 8/28/24	Ramsey Electronics® 590 Fishers Station Dr. Fishers, IN 46038 PH: (681) 924-4560	
C.A.D.: SolidWorks		INTERPRET GEOMETRIC TOLERANCING PER ASME Y14.5-2009		DRAWN	CHECKED	ENG. APPR.	MFG. APPR.	TITLE: UNIVERSAL AC INPUT
MATERIAL		FINISH		COMMENTS:		SIZE B	DWG. NO. PS111	REV
DO NOT SCALE DRAWING		MODEL NAME: PS111		SCALE: 1:2		SHEET 1 OF 1		

The information in this datasheet, although believed to be accurate, is not to be taken as warranty for which Ramsey Electronics assumes legal responsibility. Ramsey Electronics reserves the right to make changes, corrections, and improvements to its products and/or this document at anytime without notice.