

RF FILTERED BANANA JACK INTERFACE

STEBJ4C



Overview

The STEBJ4C is a four-conductor low-pass filtered Banana Jack interface. The interface has two pairs of red and black jacks. Each pair of jacks is spaced a 0.75 inches (19.05mm), which is standard spacing for Dual Banana Plugs. An optional Banana Plug solderless connector is available for easy connection to bare wires.

Applications

The primary application is for use in RF Shielded Test Enclosures. The interface will also work well in RF Screen Room applications, or anywhere you need to pass low voltage dc power, small AC signals, control signals, or low speed data.

Features

- Passive Filtering.
- Two Pairs of Banana Jacks.
- Banana Jacks spaced for Dual Banana Plug use.
- Single Flange Nut for mounting.
- RF Gasket Washers to provide high quality RF bond.



STEBJ4C Interface Specifications

Power Requirements: None, Passive

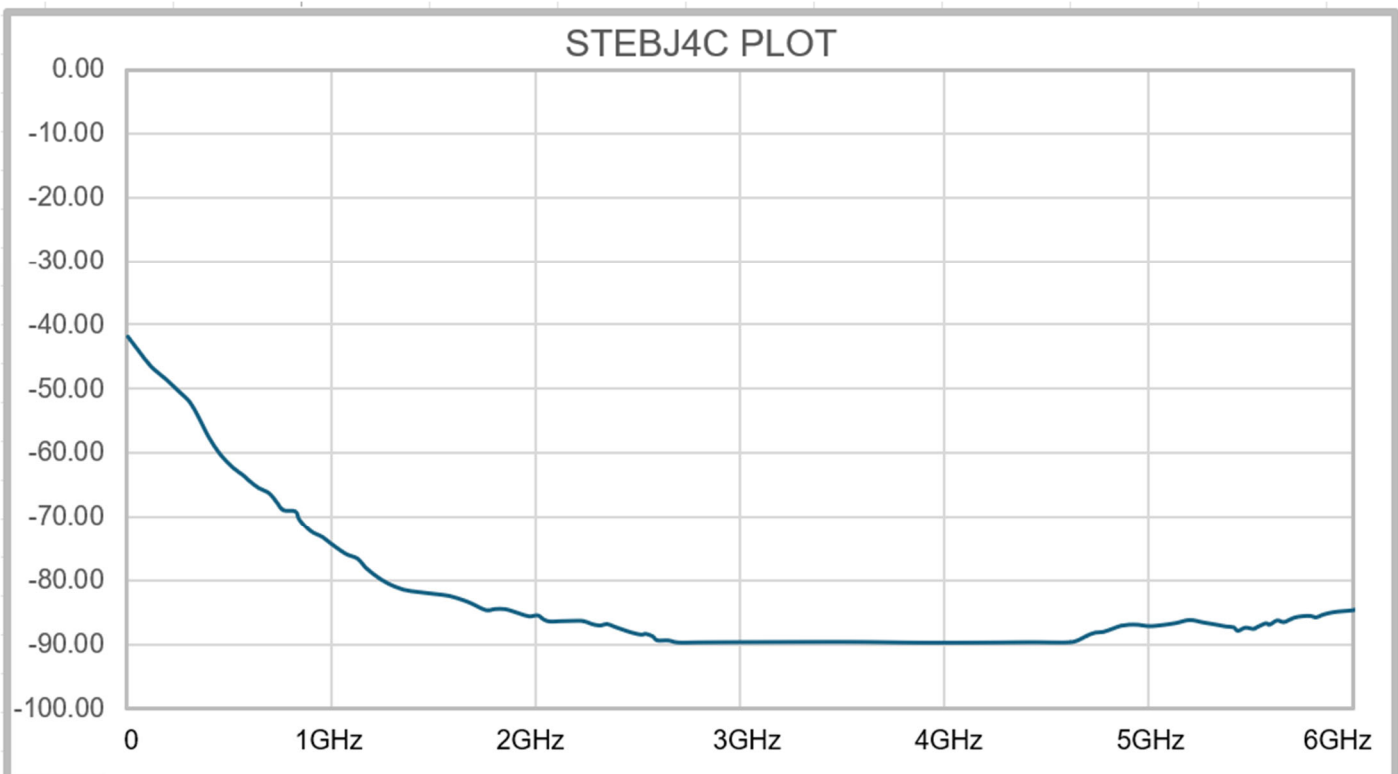
Ports:
2 Red Ports (4 Jacks) Banana Jacks.
2 Black Ports (4 Jacks) Banana Jacks.

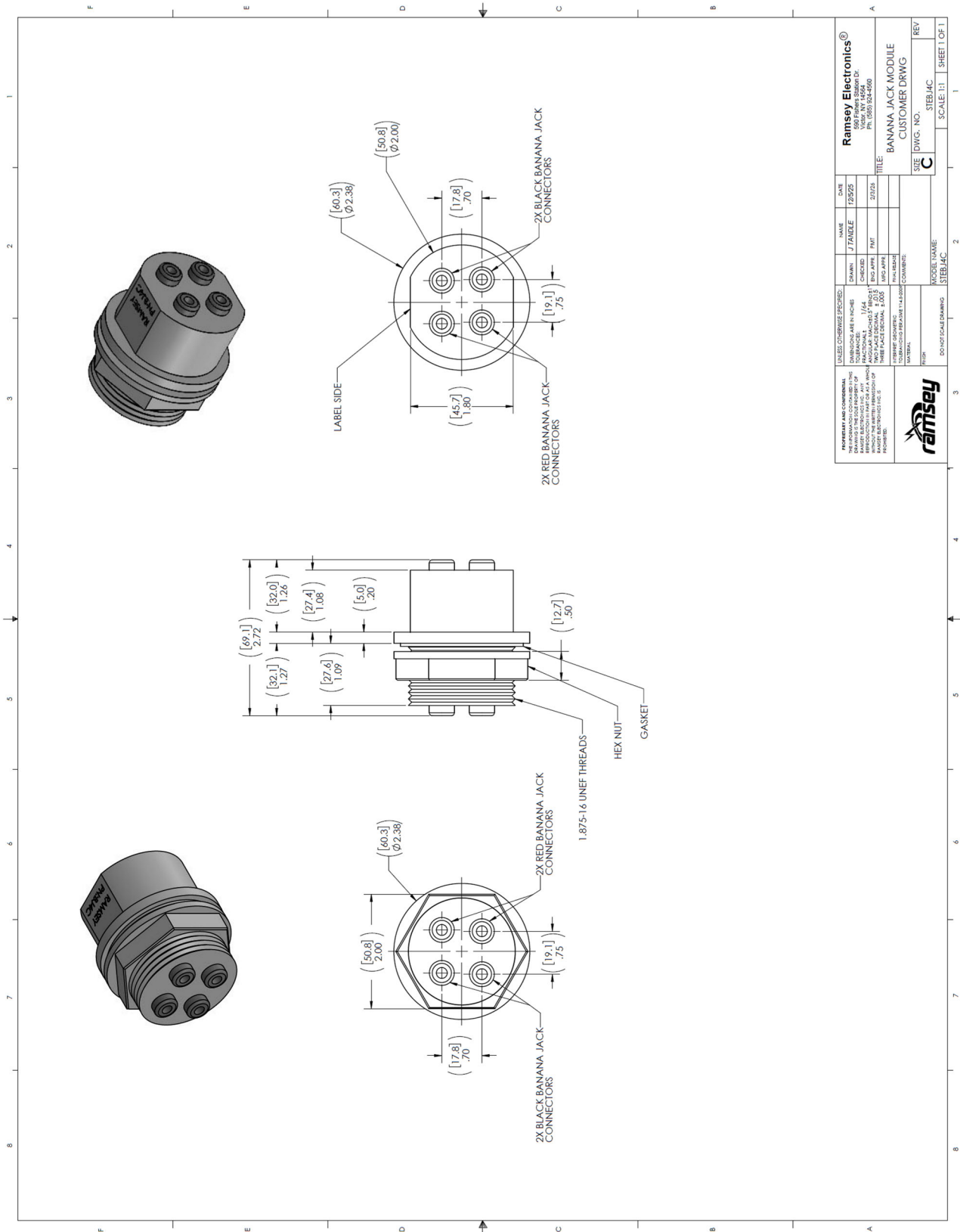
Electrical:
Working Voltage: 50VRMS.
Maximum Current: 10 Amps.

Conductive Insertion Loss (Typical):
10MHz >12dB.
100MHz: >40dB.
1GHz: >70dB.
6GHz: >80dB

Mechanical:
Construction: Milled Aluminum, Electroless Nickel Plated.
Dimensions: 2.72" long (69.1mm) x 2.38" (60.5mm) in diameter.
Operating Temperature: -67°F (-55°C) to 221°F (105°C).
Mounting: Panel Mount.
Maximum Panel Thickness: 0.575" (14.6mm).

STEBJ4C Typical Insertion Loss Plot





The information in this datasheet, although believed to be accurate, is not to be taken as warranty for which Ramsey Electronics assumes legal responsibility. Ramsey Electronics reserves the right to make changes, corrections, and improvements to its products and/or this document at anytime without notice.